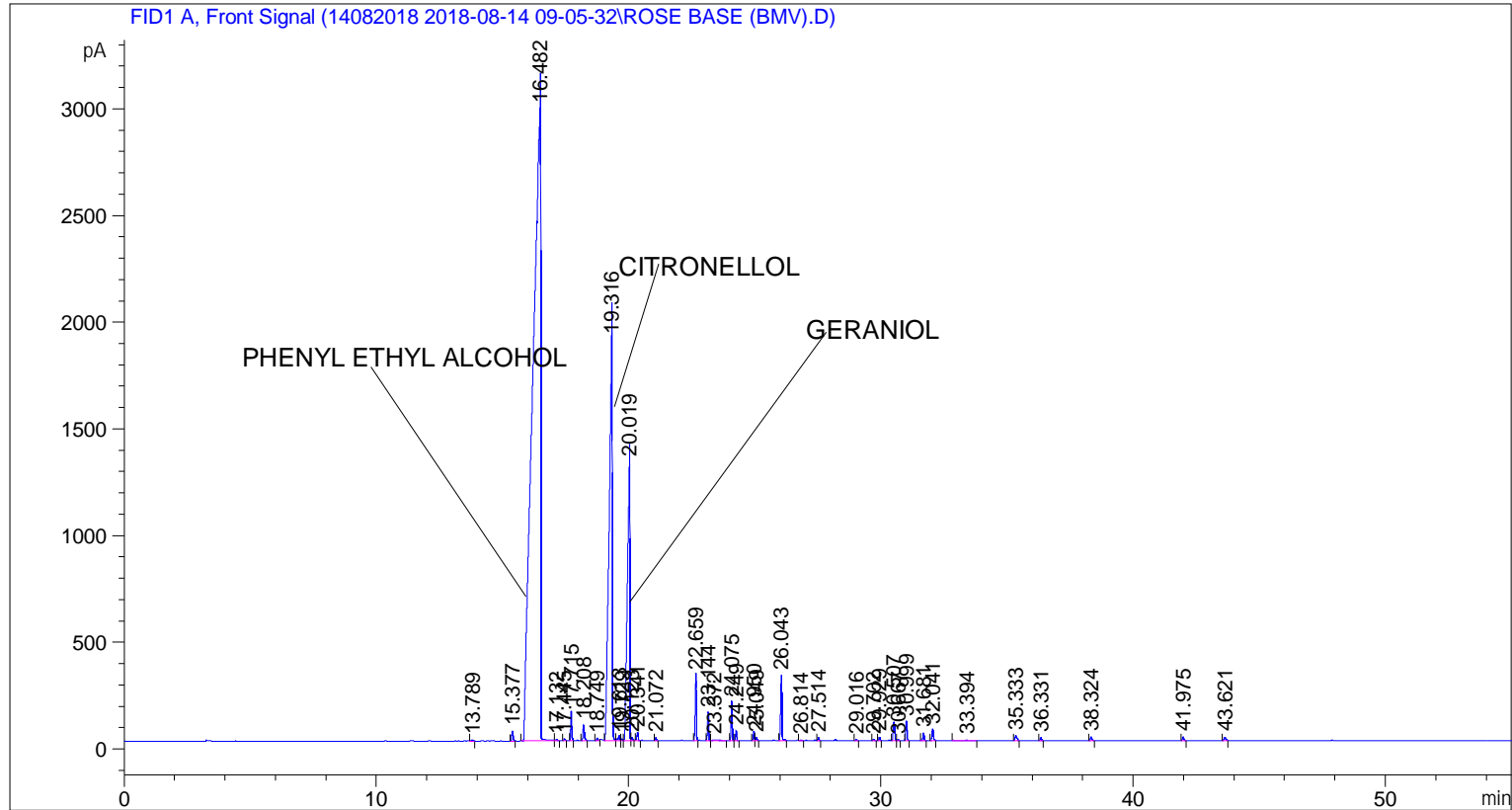


```

=====
Acq. Operator   : SYSTEM                               Seq. Line :    1
Acq. Instrument : BMV_NEW_GC_7820                     Location  : Vial 101
Injection Date  : 8/14/2018 9:17:23 AM                Inj       :    1
                                                    Inj Volume: 0.5 µl

Acq. Method     : C:\CHEM32\2\DATA\14082018 2018-08-14 09-05-32\UNIVERSAL BMV.M
Last changed    : 8/14/2018 9:05:37 AM by SYSTEM
Analysis Method : C:\CHEM32\2\DATA\13082018 2018-08-13 09-26-20\UNIVERSAL BMV.M (Sequence
Method)
Last changed    : 8/14/2018 10:21:13 AM by SYSTEM
                  (modified after loading)
  
```



Area Percent Report

```

Sorted By      : Signal
Multiplier     : 1.0000
Dilution      : 1.0000
Do not use Multiplier & Dilution Factor with ISTDs
  
```

Signal 1: FID1 A, Front Signal

Peak #	RetTime [min]	Type	Width [min]	Area [pA*s]	Height [pA]	Area %
1	13.789	BB	0.0591	19.04140	5.15251	0.01962
2	15.377	BB	0.0602	172.09627	45.42260	0.17730
3	16.482	BB	0.2818	6.49709e4	3034.16699	66.93462
4	17.132	BB	0.0683	24.43153	5.44508	0.02517
5	17.445	BB	0.0500	26.48329	8.12809	0.02728
6	17.715	BB	0.0478	416.71936	135.87244	0.42931
7	18.208	BB	0.0669	296.29150	73.77351	0.30525

Sample Name: ROSE BASE (BMV)

Peak #	RetTime [min]	Type	Width [min]	Area [pA*s]	Height [pA]	Area %
8	18.749	BB	0.0759	55.48231	10.81015	0.05716
9	19.316	BV	0.1304	1.65067e4	1880.19116	17.00565
10	19.613	VV	0.0671	100.11995	22.86332	0.10315
11	19.729	VV	0.0444	23.76351	8.55052	0.02448
12	20.019	VV	0.0933	9103.18848	1305.83911	9.37833
13	20.123	VB	0.0506	45.92477	13.87167	0.04731
14	20.341	BB	0.0573	133.91212	37.79165	0.13796
15	21.072	BB	0.0463	43.75085	14.87253	0.04507
16	22.659	BB	0.0497	995.75494	307.83295	1.02585
17	23.144	BB	0.0544	429.63437	130.66612	0.44262
18	23.372	BB	0.1855	63.79323	4.60771	0.06572
19	24.075	BB	0.0477	555.77563	181.76775	0.57257
20	24.249	BB	0.0498	151.51881	46.73350	0.15610
21	24.950	BV	0.0519	130.27686	42.34929	0.13421
22	25.049	VB	0.0554	61.47333	16.52396	0.06333
23	26.043	BB	0.0549	1022.42169	306.66022	1.05332
24	26.814	BB	0.0514	12.89132	4.24840	0.01328
25	27.514	BB	0.0517	47.66521	14.01898	0.04911
26	29.016	BB	0.0559	24.41601	7.14745	0.02515
27	29.702	BB	0.0568	28.23008	7.34492	0.02908
28	29.929	BB	0.0513	61.54931	18.29285	0.06341
29	30.507	BV	0.0693	368.02762	87.00833	0.37915
30	30.667	VB	0.0568	25.32443	7.24494	0.02609
31	30.999	BB	0.0566	314.37625	90.40398	0.32388
32	31.681	BB	0.0594	136.35413	36.69436	0.14048
33	32.041	BB	0.0619	217.09384	55.12248	0.22366
34	33.394	BB	0.0855	36.48023	6.12154	0.03758
35	35.333	BB	0.0728	130.42139	25.00918	0.13436
36	36.331	BB	0.0567	57.28831	16.42310	0.05902
37	38.324	BB	0.0709	87.14896	18.51803	0.08978
38	41.975	BB	0.0664	76.23758	17.63368	0.07854
39	43.621	BB	0.0808	93.20914	17.89652	0.09603

Totals : 9.70662e4 8069.02154

*** End of Report ***