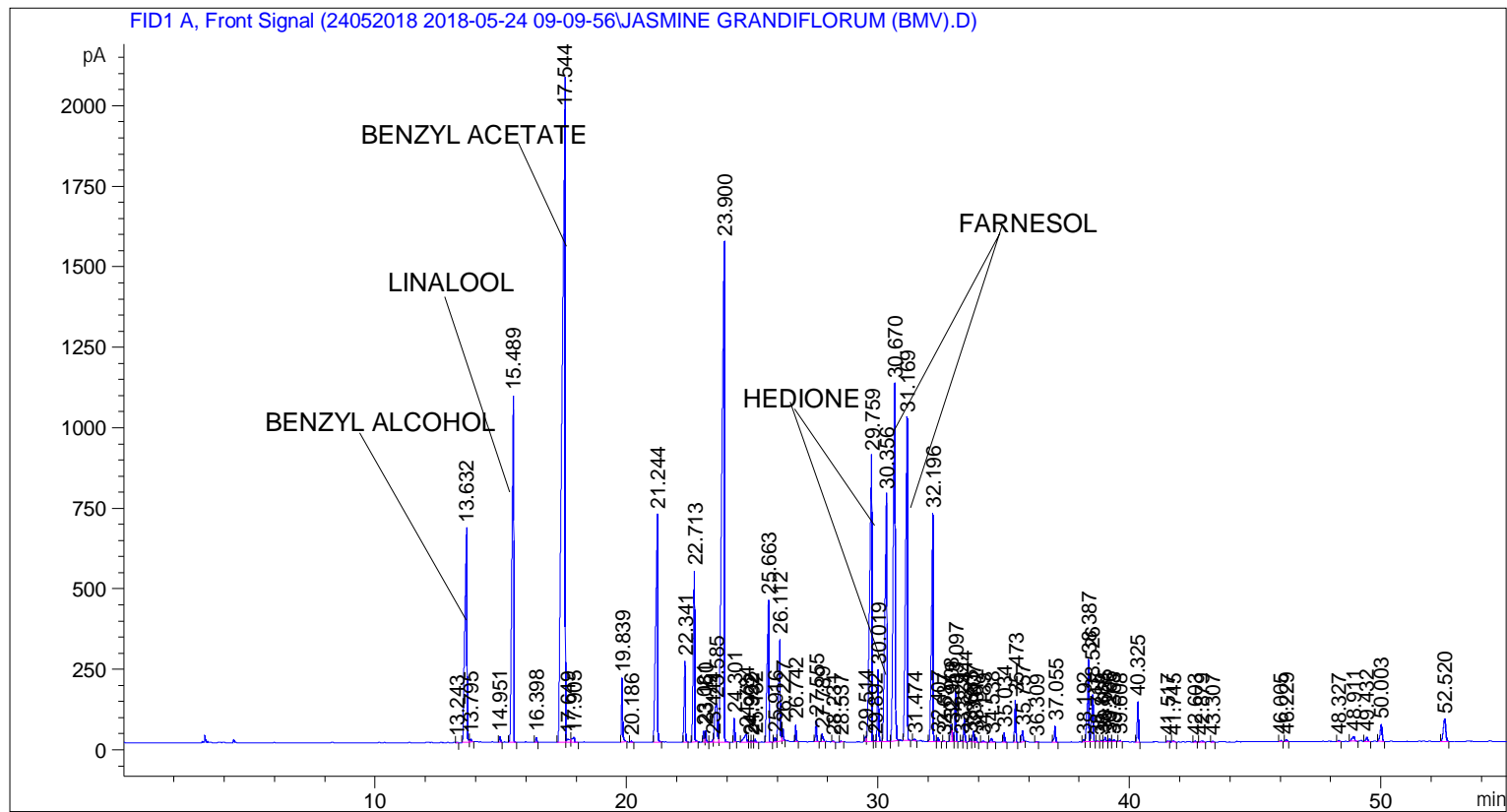


```

=====
Acq. Operator   : SYSTEM                               Seq. Line :    1
Acq. Instrument : BMV_NEW_GC_7820                     Location  : Vial 101
Injection Date  : 5/24/2018 9:13:47 AM                Inj       :    1
                                                    Inj Volume: 0.5 µl

Method          : C:\CHEM32\2\DATA\24052018 2018-05-24 09-09-56\UNIVERSAL F.M (Sequence
                Method)
Last changed    : 5/24/2018 9:10:01 AM by SYSTEM
Additional Info : Peak(s) manually integrated
  
```



Area Percent Report

```

Sorted By      : Signal
Multiplier     : 1.0000
Dilution      : 1.0000
Do not use Multiplier & Dilution Factor with ISTDs
  
```

Signal 1: FID1 A, Front Signal

Peak #	RetTime [min]	Type	Width [min]	Area [pA*s]	Height [pA]	Area %
1	13.243	BB	0.0446	5.89333	2.04572	0.00724
2	13.632	BV	0.0773	4005.09058	665.10962	4.91796
3	13.795	VB	0.0598	36.48191	8.72142	0.04480
4	14.951	BB	0.0501	55.52201	17.02165	0.06818
5	15.489	BB	0.0668	5330.89502	1075.58154	6.54595
6	16.398	BB	0.0511	50.97150	15.61338	0.06259
7	17.544	BV	0.1045	1.73655e4	2057.31006	21.32358
8	17.649	VB	0.1057	86.89205	10.70491	0.10670
9	17.905	BB	0.0871	101.89268	14.83600	0.12512

Sample Name: JASMINE GRANDIFLORUM (BMV)

Peak #	RetTime [min]	Type	Width [min]	Area [pA*s]	Height [pA]	Area %
10	19.839	BB	0.0506	658.11115	198.77734	0.80811
11	20.186	BB	0.0520	9.80266	3.00655	0.01204
12	21.244	BB	0.0734	3905.50073	707.99548	4.79567
13	22.341	BB	0.0521	911.90155	252.81889	1.11975
14	22.713	BB	0.0610	2139.78540	530.69495	2.62750
15	23.081	BV	0.0479	108.31404	35.20756	0.13300
16	23.160	VB	0.0492	118.48989	37.19868	0.14550
17	23.444	BV	0.0531	31.97901	8.45067	0.03927
18	23.585	VV	0.0970	864.68298	121.50098	1.06177
19	23.900	VB	0.0908	1.11594e4	1553.44592	13.70292
20	24.301	BB	0.0473	220.12677	72.71101	0.27030
21	24.784	BV	0.1002	206.45618	26.40734	0.25351
22	24.922	VV	0.0500	11.17345	3.25545	0.01372
23	24.992	VV	0.0602	17.17420	4.24453	0.02109
24	25.132	VB	0.0507	29.22293	8.81118	0.03588
25	25.663	BB	0.0657	2146.29590	441.66562	2.63549
26	25.916	BV	0.0586	45.94445	12.28063	0.05642
27	26.112	VV	0.0665	1556.52820	315.78583	1.91130
28	26.227	VB	0.0534	135.89206	38.27847	0.16687
29	26.742	BB	0.0469	156.34282	52.22291	0.19198
30	27.555	BB	0.0503	218.12431	64.81450	0.26784
31	27.789	BB	0.0594	97.89463	24.07573	0.12021
32	28.231	BB	0.0453	10.64234	3.51823	0.01307
33	28.537	BB	0.0566	11.84708	3.10185	0.01455
34	29.514	BV	0.0554	63.00741	16.56952	0.07737
35	29.759	VV	0.0746	5218.49268	887.34900	6.40792
36	29.892	VV	0.0689	16.06373	3.68554	0.01973
37	30.019	VB	0.0561	805.26453	223.22966	0.98881
38	30.356	BV	0.0707	4056.03931	767.35535	4.98052
39	30.670	VB	0.0690	5890.09619	1109.12695	7.23260
40	31.169	BB	0.0649	4796.19873	1000.84357	5.88938
41	31.474	BV	0.0669	28.25899	6.00011	0.03470
42	32.196	BB	0.0605	3250.58252	708.29053	3.99148
43	32.407	BB	0.0501	39.21846	12.33104	0.04816
44	32.637	BB	0.0476	6.67081	2.18315	0.00819
45	32.908	BV	0.0494	177.13844	52.43040	0.21751
46	32.959	VV	0.0390	100.22717	39.02431	0.12307
47	33.097	VB	0.0506	515.51575	159.90773	0.63302
48	33.329	BV	0.0468	11.21592	3.75778	0.01377
49	33.444	VB	0.0526	251.20988	75.96984	0.30847
50	33.683	BV	0.0513	34.35453	10.74241	0.04218
51	33.807	VV	0.0510	111.53024	33.39705	0.13695
52	33.912	VB	0.0507	48.25835	14.93987	0.05926
53	34.189	BB	0.0784	21.07457	4.44058	0.02588
54	34.538	BB	0.0766	57.55484	10.39471	0.07067
55	35.034	BB	0.0525	92.23003	27.93272	0.11325
56	35.473	BB	0.0502	426.36429	130.09933	0.52354
57	35.757	BB	0.0595	125.56694	33.64312	0.15419
58	36.309	BB	0.0557	7.34100	2.00474	0.00901
59	37.055	BB	0.0581	190.14119	50.32600	0.23348
60	38.192	BV	0.0546	26.25043	7.73462	0.03223
61	38.387	VV	0.0597	1117.37439	257.31888	1.37205
62	38.526	VB	0.0545	525.11670	147.46329	0.64480
63	38.715	BB	0.0475	8.22300	2.86550	0.01010

Peak #	RetTime [min]	Type	Width [min]	Area [pA*s]	Height [pA]	Area %
64	38.888	BV	0.0626	14.67309	3.75257	0.01802
65	39.025	VV	0.0702	70.70369	14.16749	0.08682
66	39.206	VV	0.0570	34.50433	9.35841	0.04237
67	39.363	VB	0.0786	33.63203	5.71642	0.04130
68	39.608	BB	0.0458	10.89658	3.87962	0.01338
69	40.325	BB	0.0521	416.73306	124.47562	0.51172
70	41.517	BB	0.0579	13.72756	3.49105	0.01686
71	41.745	BB	0.0594	15.95436	4.00900	0.01959
72	42.603	BB	0.0538	9.18103	2.75727	0.01127
73	42.879	BB	0.0782	21.41382	3.61066	0.02629
74	43.307	BB	0.0552	7.37067	2.14074	0.00905
75	46.005	BB	0.0550	11.81752	3.45068	0.01451
76	46.229	BB	0.0617	25.27893	6.05165	0.03104
77	48.327	BB	0.0616	12.63838	3.09573	0.01552
78	48.911	BB	0.0949	96.25500	14.59574	0.11819
79	49.432	BB	0.0687	64.36276	13.71943	0.07903
80	50.003	BB	0.0809	281.99951	52.31216	0.34627
81	52.520	BB	0.0969	469.60687	70.37364	0.57664

Totals : 8.14381e4 1.45295e4

=====
*** End of Report ***