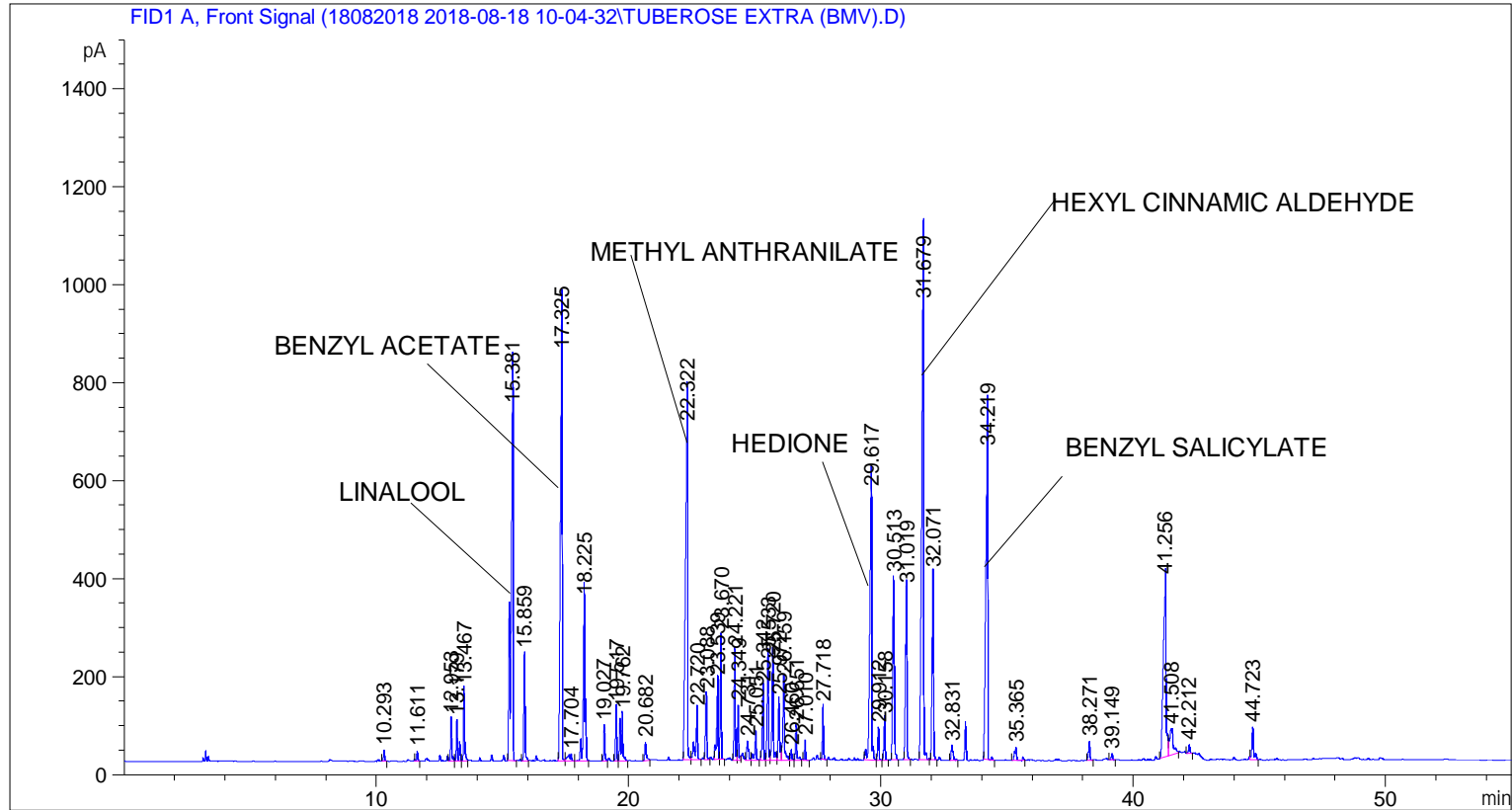


```

=====
Acq. Operator   : SYSTEM                               Seq. Line :    3
Acq. Instrument : BMV_NEW_GC_7820                     Location  : Vial 103
Injection Date  : 8/18/2018 12:35:25 PM              Inj       :    1
                                                    Inj Volume: 0.5 µl

Acq. Method     : C:\CHEM32\2\DATA\18082018 2018-08-18 10-04-32\UNIVERSAL BMV.M
Last changed    : 8/18/2018 10:04:38 AM by SYSTEM
Analysis Method : C:\CHEM32\2\DATA\18082018 2018-08-18 10-04-32\UNIVERSAL BMV.M (Sequence
Method)
Last changed    : 8/18/2018 4:12:37 PM by SYSTEM
                  (modified after loading)
  
```



=====
 Area Percent Report
 =====

```

Sorted By       :      Signal
Multiplier      :      1.0000
Dilution       :      1.0000
Do not use Multiplier & Dilution Factor with ISTDs
  
```

Signal 1: FID1 A, Front Signal

Peak #	RetTime [min]	Type	Width [min]	Area [pA*s]	Height [pA]	Area %
1	10.293	BB	0.0509	65.97529	22.07669	0.13575
2	11.611	BB	0.0503	59.11845	20.09815	0.12164
3	12.953	BV	0.0566	271.01212	86.31184	0.55762
4	13.179	VV	0.0692	348.38913	82.60849	0.71683
5	13.467	VB	0.0546	482.45193	145.69913	0.99266
6	15.381	BB	0.0907	4354.39160	718.66351	8.95934
7	15.859	BB	0.0577	708.54791	219.29233	1.45787

Peak #	RetTime [min]	Type	Width [min]	Area [pA*s]	Height [pA]	Area %
8	17.325	BB	0.0829	4474.48486	830.06494	9.20644
9	17.704	BV	0.1687	133.82671	12.52465	0.27535
10	18.225	VB	0.0804	1695.20129	327.47455	3.48795
11	19.027	BB	0.0530	226.01393	71.33521	0.46503
12	19.517	BV	0.0544	325.83026	110.49271	0.67041
13	19.762	VB	0.0873	590.37067	96.63907	1.21471
14	20.682	BB	0.0752	158.87314	36.20593	0.32689
15	22.322	BV	0.0929	4252.37402	680.42114	8.74944
16	22.720	VB	0.0779	524.92761	98.87225	1.08006
17	23.088	BB	0.0653	520.65118	134.07941	1.07126
18	23.539	BV	0.0708	704.50385	161.87149	1.44955
19	23.670	VB	0.0523	789.39490	253.72092	1.62421
20	24.221	BV	0.0588	739.04987	222.15451	1.52063
21	24.349	VB	0.0512	373.04657	111.05981	0.76756
22	24.731	BV	0.0790	182.95447	38.78141	0.37644
23	25.051	VB	0.0745	266.17123	57.01794	0.54766
24	25.342	BV	0.0681	609.40179	147.80621	1.25387
25	25.533	VV	0.0676	801.49109	196.37085	1.64910
26	25.720	VV	0.0638	848.12769	206.90411	1.74506
27	25.972	VV	0.0673	496.74005	122.58264	1.02206
28	26.159	VV	0.0701	764.29803	164.71207	1.57257
29	26.460	VV	0.0643	78.92899	20.77421	0.16240
30	26.651	VB	0.0643	266.06213	70.12117	0.54743
31	27.010	BB	0.0566	123.95232	39.50396	0.25504
32	27.718	BB	0.0568	337.33267	107.01408	0.69408
33	29.617	BV	0.0835	2982.26465	548.13019	6.13613
34	29.912	VB	0.0574	215.65750	67.24575	0.44372
35	30.158	BB	0.0609	299.16455	85.34557	0.61554
36	30.513	BB	0.0703	1601.96985	371.81586	3.29612
37	31.019	BB	0.0679	1433.80396	349.19803	2.95011
38	31.679	BB	0.0978	5876.43164	929.44678	12.09100
39	32.071	BB	0.0664	1515.63416	381.33237	3.11848
40	32.831	BB	0.0998	160.50008	27.63641	0.33024
41	34.219	BB	0.0896	3751.08252	629.00293	7.71801
42	35.365	BB	0.1074	158.68048	25.92484	0.32649
43	38.271	BB	0.0653	144.24144	37.13046	0.29678
44	39.149	BB	0.0599	42.73471	12.49202	0.08793
45	41.256	BV	0.1343	2925.02661	361.86063	6.01836
46	41.508	VB	0.1524	534.43304	51.77277	1.09962
47	42.212	BB	0.0630	62.94418	17.09464	0.12951
48	44.723	BB	0.0773	323.22543	65.86335	0.66505

Totals : 4.86017e4 9574.54795

=====
*** End of Report ***