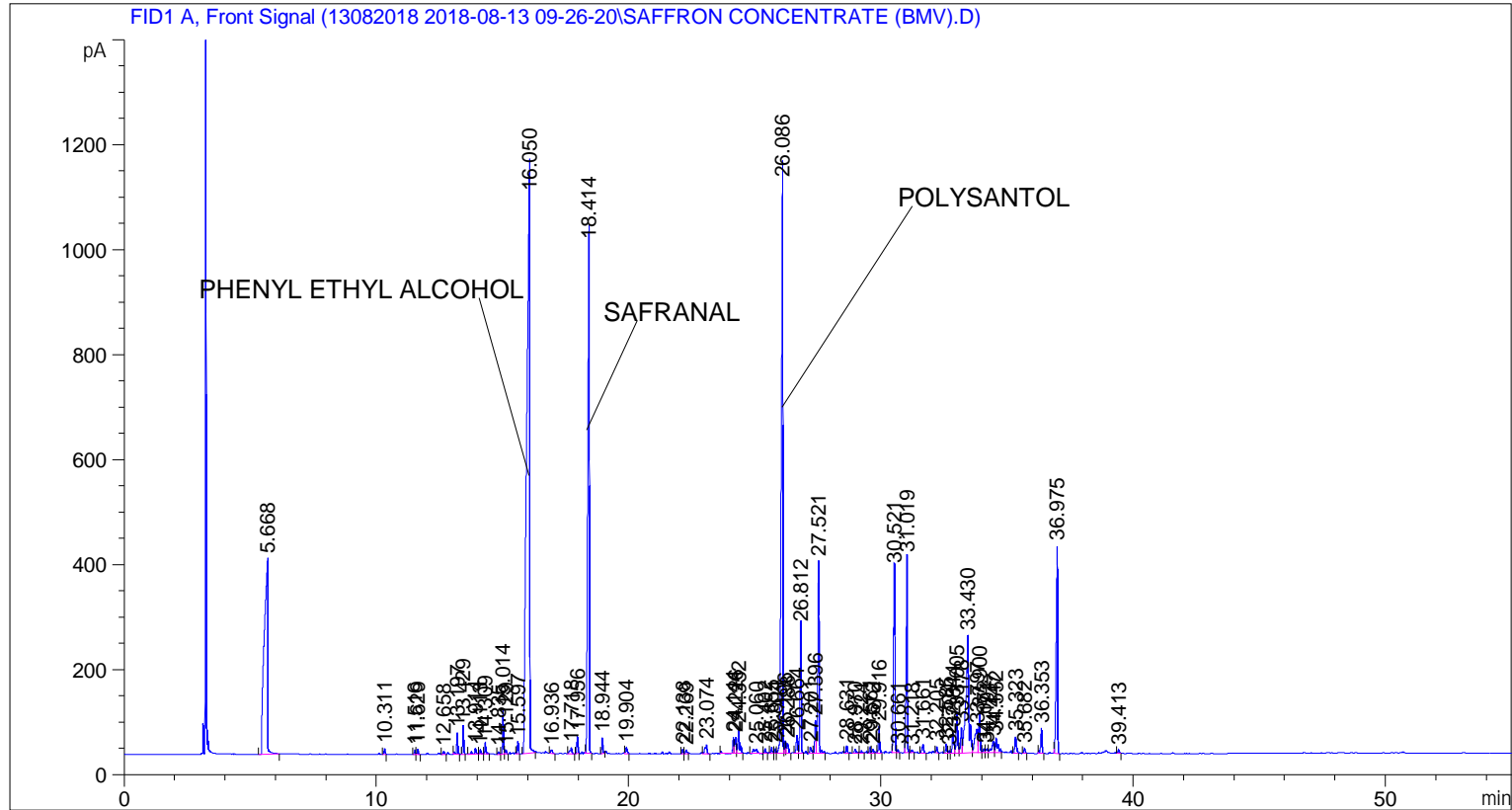


```
=====
Acq. Operator   : SYSTEM                               Seq. Line :    3
Acq. Instrument : BMV_NEW_GC_7820                     Location  : Vial 103
Injection Date  : 8/13/2018 11:55:53 AM                Inj       :    1
                                                    Inj Volume: 0.5 µl

Acq. Method    : C:\CHEM32\2\DATA\13082018 2018-08-13 09-26-20\UNIVERSAL BMV.M
Last changed   : 8/13/2018 9:26:26 AM by SYSTEM
Analysis Method: C:\CHEM32\2\DATA\13082018 2018-08-13 09-26-20\UNIVERSAL BMV.M (Sequence
Method)
Last changed   : 8/14/2018 9:20:03 AM by SYSTEM
                (modified after loading)
Additional Info : Peak(s) manually integrated
=====
```



=====
 Area Percent Report
 =====

```
Sorted By      :      Signal
Multiplier     :      1.0000
Dilution       :      1.0000
Do not use Multiplier & Dilution Factor with ISTDs
```

Signal 1: FID1 A, Front Signal

Peak #	RetTime [min]	Type	Width [min]	Area [pA*s]	Height [pA]	Area %
1	5.668	BB	0.1890	3724.93286	371.45184	10.39762
2	10.311	BB	0.0443	28.52483	10.29274	0.07962
3	11.516	BV	0.0442	21.92671	7.93741	0.06121
4	11.629	VB	0.0505	28.10896	9.49528	0.07846
5	12.658	BB	0.0570	17.68976	5.03104	0.04938
6	13.197	BB	0.0484	123.98170	39.69759	0.34608

Sample Name: SAFFRON CONCENTRATE (BMV)

Peak #	RetTime [min]	Type	Width [min]	Area [pA*s]	Height [pA]	Area %
7	13.429	BB	0.0466	155.85403	52.61481	0.43504
8	13.914	BV	0.0687	55.19153	11.34823	0.15406
9	14.113	VV	0.0516	28.39191	8.35737	0.07925
10	14.309	VB	0.0551	72.17579	21.55909	0.20147
11	14.835	BB	0.0528	16.40200	4.69454	0.04578
12	15.014	BV	0.0504	236.61948	80.26601	0.66049
13	15.129	VB	0.0503	25.83478	7.87365	0.07211
14	15.597	BB	0.0467	69.74608	23.44860	0.19469
15	16.050	BB	0.1180	9278.48535	1060.90723	25.89956
16	16.936	BB	0.0737	31.08298	6.74913	0.08676
17	17.718	BB	0.0781	60.56743	11.37045	0.16907
18	17.956	BB	0.0504	107.19701	32.54355	0.29923
19	18.414	BB	0.0694	4434.67822	968.70166	12.37877
20	18.944	BB	0.0492	94.14954	29.50154	0.26280
21	19.904	BB	0.0617	47.56170	12.14919	0.13276
22	22.138	BV	0.0492	30.08297	9.42528	0.08397
23	22.269	VB	0.0748	34.97345	6.94460	0.09762
24	23.074	BB	0.0767	90.87415	16.39082	0.25366
25	24.144	BV	0.0558	111.26560	29.63873	0.31058
26	24.226	VV	0.0618	118.81023	30.27731	0.33164
27	24.352	VB	0.0660	218.89474	47.33189	0.61101
28	25.060	BB	0.1265	76.98829	7.84532	0.21490
29	25.402	BB	0.0598	33.79226	8.99766	0.09433
30	25.655	BV	0.0605	41.32552	10.83162	0.11535
31	25.804	VV	0.0574	29.22007	8.23243	0.08156
32	26.086	VV	0.0658	5012.98438	1086.68079	13.99303
33	26.196	VV	0.0536	84.47794	23.71391	0.23581
34	26.288	VB	0.0767	88.99140	18.30698	0.24841
35	26.664	BV	0.0626	132.37386	33.12048	0.36950
36	26.812	VB	0.0546	790.57019	239.22829	2.20676
37	27.201	BV	0.0744	59.75832	11.94113	0.16681
38	27.396	VV	0.0530	219.34717	62.47388	0.61228
39	27.521	VB	0.0566	1270.86609	364.83057	3.54744
40	28.631	BB	0.0513	43.37271	14.32433	0.12107
41	28.970	BB	0.0743	32.84843	7.06232	0.09169
42	29.224	BB	0.0543	14.10374	4.29213	0.03937
43	29.561	BV	0.0541	39.37944	12.07259	0.10992
44	29.672	VB	0.0736	32.24643	6.53071	0.09001
45	29.916	BB	0.0521	166.76904	48.57530	0.46551
46	30.521	BV	0.0642	1450.13000	351.22751	4.04783
47	30.661	VB	0.0521	21.03747	6.11411	0.05872
48	31.019	BB	0.0524	1283.30139	370.94406	3.58215
49	31.218	BB	0.0670	22.49213	5.14793	0.06278
50	31.661	BB	0.0736	79.78930	16.15554	0.22272
51	32.205	BB	0.0526	38.62498	11.09618	0.10782
52	32.585	BV	0.0578	62.62174	17.48819	0.17480
53	32.704	VV	0.0600	17.21590	4.56117	0.04806
54	32.844	VV	0.0688	175.37280	38.71789	0.48953
55	33.005	VV	0.0634	311.22189	76.59010	0.86873
56	33.178	VV	0.0613	185.08591	47.71663	0.51664
57	33.430	VV	0.1075	1746.95337	222.76454	4.87637
58	33.797	VV	0.1148	380.72083	44.96288	1.06273
59	33.900	VB	0.0556	279.15430	74.73759	0.77922
60	34.072	BV	0.0635	30.43088	7.47818	0.08494

Peak #	RetTime [min]	Type	Width [min]	Area [pA*s]	Height [pA]	Area %
61	34.191	VV	0.0689	35.16325	7.20673	0.09815
62	34.447	VV	0.1037	143.15437	20.94626	0.39959
63	34.552	VB	0.0849	171.73453	27.49109	0.47937
64	35.323	BB	0.0685	139.75551	31.05400	0.39011
65	35.682	BB	0.0608	35.82404	9.32356	0.10000
66	36.353	BB	0.0549	173.49799	47.21470	0.48429
67	36.975	BB	0.0628	1586.88171	395.71118	4.42955
68	39.413	BB	0.0544	21.28934	6.46464	0.05943

Totals : 3.58249e4 6726.17466

=====
*** End of Report ***