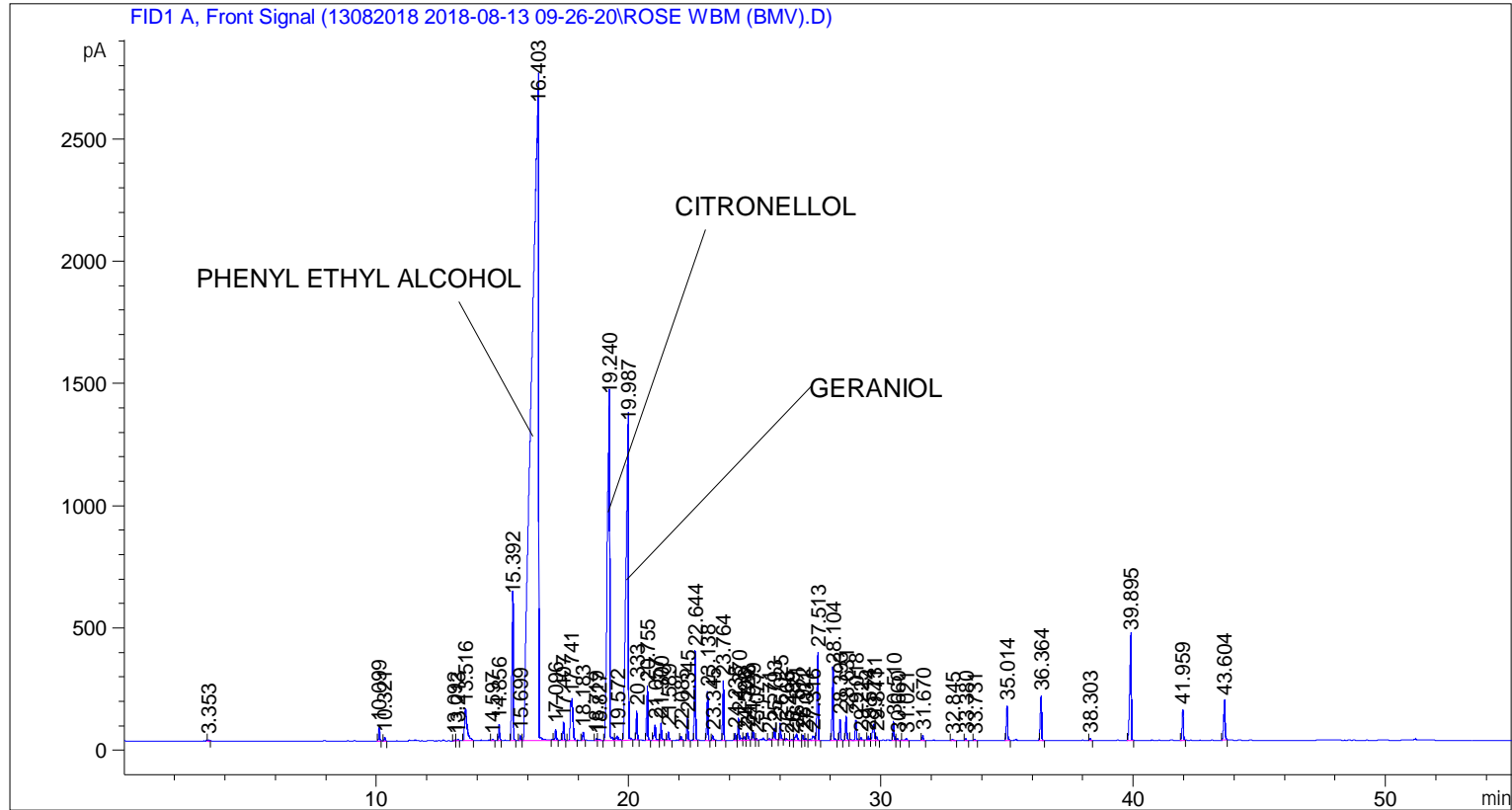


```

=====
Acq. Operator   : SYSTEM                               Seq. Line :    2
Acq. Instrument : BMV_NEW_GC_7820                     Location  : Vial 102
Injection Date  : 8/13/2018 10:47:15 AM                Inj       :    1
                                                    Inj Volume: 0.5 µl

Acq. Method    : C:\CHEM32\2\DATA\13082018 2018-08-13 09-26-20\UNIVERSAL BMV.M
Last changed   : 8/13/2018 9:26:26 AM by SYSTEM
Analysis Method : C:\CHEM32\2\DATA\13082018 2018-08-13 09-26-20\UNIVERSAL BMV.M (Sequence
Method)
Last changed   : 8/14/2018 9:12:46 AM by SYSTEM
                (modified after loading)
Additional Info : Peak(s) manually integrated
  
```



=====  
 Area Percent Report  
 =====

```

Sorted By      :      Signal
Multiplier     :      1.0000
Dilution      :      1.0000
Do not use Multiplier & Dilution Factor with ISTDs
  
```

Signal 1: FID1 A, Front Signal

Peak #	RetTime [min]	Type	Width [min]	Area [pA*s]	Height [pA]	Area %
1	3.353	BB	0.0436	11.22796	3.90090	0.01235
2	10.099	BB	0.0444	153.83147	55.43156	0.16925
3	10.321	BB	0.0474	42.01174	14.66864	0.04622
4	13.092	BV	0.0437	11.66851	4.29038	0.01284
5	13.213	VB	0.0475	18.22755	5.99437	0.02005
6	13.516	BB	0.1053	935.06183	130.91483	1.02879

Sample Name: ROSE WBM (BMV)

Peak #	RetTime [min]	Type	Width [min]	Area [pA*s]	Height [pA]	Area %
7	14.597	BB	0.0544	17.13396	4.95048	0.01885
8	14.856	BB	0.0480	188.58435	64.74249	0.20749
9	15.392	BB	0.0580	2171.82935	576.49701	2.38952
10	15.699	BV	0.0457	60.13137	20.79422	0.06616
11	16.403	VB	0.2432	5.21217e4	2653.62646	57.34601
12	17.096	BB	0.0528	155.22238	46.64633	0.17078
13	17.407	BB	0.0478	224.41109	73.10935	0.24690
14	17.741	BB	0.0902	1168.46619	169.87552	1.28559
15	18.183	BB	0.0534	109.54866	32.46365	0.12053
16	18.719	BV	0.0509	26.19269	8.27783	0.02882
17	18.827	VB	0.0873	27.66710	5.09592	0.03044
18	19.240	BV	0.0964	1.00565e4	1390.14990	11.06455
19	19.572	VB	0.0767	94.07922	16.97255	0.10351
20	19.987	BB	0.1014	8722.65625	1281.06177	9.59696
21	20.333	BB	0.0498	375.66315	116.02226	0.41332
22	20.755	BB	0.0562	752.20508	218.34595	0.82760
23	21.057	BB	0.0586	252.60686	63.26434	0.27793
24	21.300	BB	0.0536	239.46719	70.47808	0.26347
25	21.589	BB	0.0526	115.16612	34.78260	0.12671
26	22.085	BB	0.0590	65.54604	16.98737	0.07212
27	22.345	BB	0.0509	293.49915	92.85938	0.32292
28	22.644	BB	0.0501	1115.60242	360.22668	1.22742
29	23.138	BB	0.0514	633.20258	197.41486	0.69667
30	23.345	BB	0.0573	72.35183	19.50089	0.07960
31	23.764	BB	0.0498	736.96271	239.91510	0.81083
32	24.238	BV	0.0513	86.72921	27.10995	0.09542
33	24.370	VV	0.0548	319.83585	91.40281	0.35189
34	24.596	VV	0.0596	60.93177	15.59661	0.06704
35	24.728	VB	0.0630	121.64765	30.19490	0.13384
36	24.939	BV	0.0566	142.03740	40.76878	0.15627
37	25.077	VB	0.0416	13.11386	5.16137	0.01443
38	25.571	BB	0.0532	17.44531	4.93817	0.01919
39	25.793	BB	0.0550	179.38966	48.63005	0.19737
40	26.025	BB	0.0546	241.52759	69.48627	0.26574
41	26.266	BB	0.0541	22.23336	6.80725	0.02446
42	26.489	BV	0.0439	12.57035	4.90884	0.01383
43	26.671	VB	0.0777	145.11224	26.59311	0.15966
44	26.922	BV	0.0521	77.68349	23.80527	0.08547
45	27.031	VV	0.0559	27.23077	7.24021	0.02996
46	27.316	VV	0.0930	123.41360	18.23189	0.13578
47	27.513	VB	0.0575	1281.44385	360.19147	1.40989
48	28.104	BB	0.0542	1002.71320	290.96942	1.10322
49	28.393	BB	0.0509	271.25168	85.69595	0.29844
50	28.631	BB	0.0540	344.81683	100.66225	0.37938
51	29.018	BB	0.0555	294.18539	82.67285	0.32367
52	29.225	BB	0.0575	40.70085	10.92469	0.04478
53	29.514	BV	0.0562	67.74832	17.88223	0.07454
54	29.731	VV	0.0990	391.39133	66.15337	0.43062
55	29.841	VB	0.0504	47.39191	15.19361	0.05214
56	30.510	BV	0.0504	245.17116	78.53536	0.26975
57	30.660	VB	0.0517	25.24980	8.25273	0.02778
58	31.021	BB	0.0897	46.75254	7.40151	0.05144
59	31.670	BB	0.0525	69.70575	21.14432	0.07669
60	32.845	BB	0.0758	26.72977	5.04237	0.02941

Sample Name: ROSE WBM (BMV)

Peak #	RetTime [min]	Type	Width [min]	Area [pA*s]	Height [pA]	Area %
61	33.380	BB	0.0528	22.94971	6.89503	0.02525
62	33.731	BB	0.0521	18.23789	5.58622	0.02007
63	35.014	BB	0.0560	485.39645	141.58760	0.53405
64	36.364	BB	0.0611	700.30219	180.98706	0.77050
65	38.303	BB	0.0558	28.29241	7.89586	0.03113
66	39.895	BB	0.0665	1859.77490	429.55975	2.04619
67	41.959	BB	0.0568	437.83853	125.23886	0.48172
68	43.604	BB	0.0612	622.39508	160.52994	0.68478

Totals : 9.08898e4 1.06191e4

=====  
\*\*\* End of Report \*\*\*