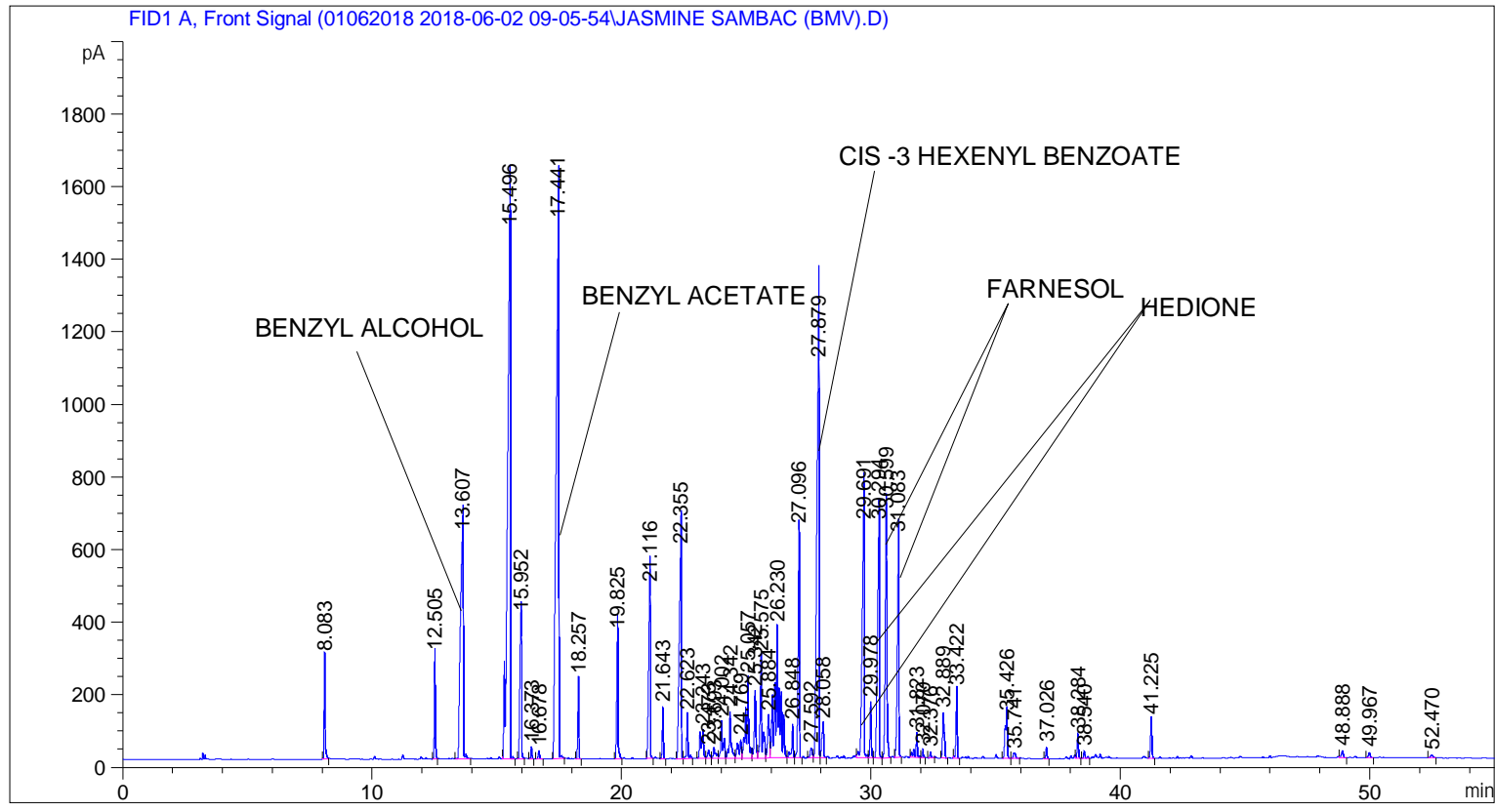


```

=====
Acq. Operator   : SYSTEM                               Seq. Line :    2
Acq. Instrument : BMV_NEW_GC_7820                     Location  : Vial 102
Injection Date  : 6/2/2018 10:36:30 AM                 Inj       :    1
                                                    Inj Volume: 0.5 µl

Acq. Method    : C:\CHEM32\2\DATA\01062018 2018-06-02 09-05-54\UNIVERSAL F.M
Last changed   : 6/2/2018 9:16:49 AM by SYSTEM
Analysis Method: C:\CHEM32\2\DATA\01062018 2018-06-02 09-05-54\UNIVERSAL F.M
Last changed   : 6/7/2018 2:55:04 PM by SYSTEM
                (modified after loading)
  
```



=====
 Area Percent Report
 =====

```

Sorted By      :      Signal
Multiplier     :      1.0000
Dilution       :      1.0000
Do not use Multiplier & Dilution Factor with ISTDs
  
```

Signal 1: FID1 A, Front Signal

Peak #	RetTime [min]	Type	Width [min]	Area [pA*s]	Height [pA]	Area %
1	8.083	BB	0.0504	827.82928	280.98364	1.00144
2	12.505	BB	0.0513	863.25372	284.96985	1.04429
3	13.607	BB	0.1475	5256.55469	616.19659	6.35894
4	15.496	BB	0.1136	1.16761e4	1454.87659	14.12482
5	15.952	BB	0.0828	1981.52905	393.02454	2.39709
6	16.373	BB	0.0547	111.26221	33.54441	0.13460
7	16.678	BB	0.0716	91.45915	22.41693	0.11064
8	17.441	BB	0.1137	1.18441e4	1474.82251	14.32799

Peak #	RetTime [min]	Type	Width [min]	Area [pA*s]	Height [pA]	Area %
9	18.257	BB	0.0553	668.81531	220.75993	0.80908
10	19.825	BB	0.0683	1425.42468	344.17267	1.72436
11	21.116	BB	0.0821	2502.69507	470.17368	3.02755
12	21.643	BB	0.0554	425.70346	140.16412	0.51498
13	22.355	BV	0.0991	3709.13281	575.82709	4.48700
14	22.623	VB	0.0617	426.99768	119.51636	0.51655
15	23.243	BV	0.1117	618.93726	78.71160	0.74874
16	23.473	VV	0.0845	127.82478	23.12759	0.15463
17	23.693	VV	0.0946	196.58339	30.75809	0.23781
18	24.002	VV	0.0849	587.88525	99.49081	0.71117
19	24.342	VV	0.0837	696.91113	127.61129	0.84307
20	24.769	VV	0.1217	439.96579	50.48304	0.53223
21	25.057	VV	0.1032	1584.30505	222.22807	1.91656
22	25.342	VV	0.0705	794.11066	183.49850	0.96065
23	25.575	VV	0.0836	1526.51770	280.18597	1.84665
24	25.884	VV	0.0877	631.76886	115.63792	0.76426
25	26.230	VV	0.1501	4146.56348	360.63794	5.01617
26	26.848	VV	0.0716	399.61792	90.33547	0.48342
27	27.096	VB	0.0648	2414.86108	629.24316	2.92130
28	27.592	BV	0.0891	136.01219	25.96179	0.16454
29	27.879	VV	0.1165	7882.24756	1088.19824	9.53529
30	28.058	VB	0.0793	468.96518	92.23895	0.56732
31	29.691	BV	0.0983	4317.36621	643.10760	5.22279
32	29.978	VV	0.0610	538.57849	153.30006	0.65153
33	30.294	VV	0.0840	3523.67090	641.84045	4.26264
34	30.599	VB	0.0818	3330.68433	672.48053	4.02918
35	31.083	BB	0.0730	2747.00757	605.18469	3.32310
36	31.823	BB	0.0826	348.04803	64.91687	0.42104
37	32.070	BB	0.0568	81.12750	23.18641	0.09814
38	32.376	BB	0.0637	55.30684	14.76069	0.06691
39	32.889	BB	0.0849	602.61438	123.46291	0.72899
40	33.422	BB	0.0610	654.62720	186.50208	0.79191
41	35.426	BB	0.0995	782.70374	114.87788	0.94685
42	35.741	BB	0.1233	104.86475	13.40309	0.12686
43	37.026	BB	0.0560	107.85900	31.42908	0.13048
44	38.284	BB	0.0628	256.76794	70.00040	0.31062
45	38.540	BB	0.0784	101.62172	20.29737	0.12293
46	41.225	BB	0.0657	420.45282	107.23933	0.50863
47	48.888	BB	0.0841	97.34452	18.90661	0.11776
48	49.967	BB	0.0824	69.80116	13.94658	0.08444
49	52.470	BB	0.1101	59.58008	8.46946	0.07208

Totals : 8.26640e4 1.34571e4

=====
*** End of Report ***