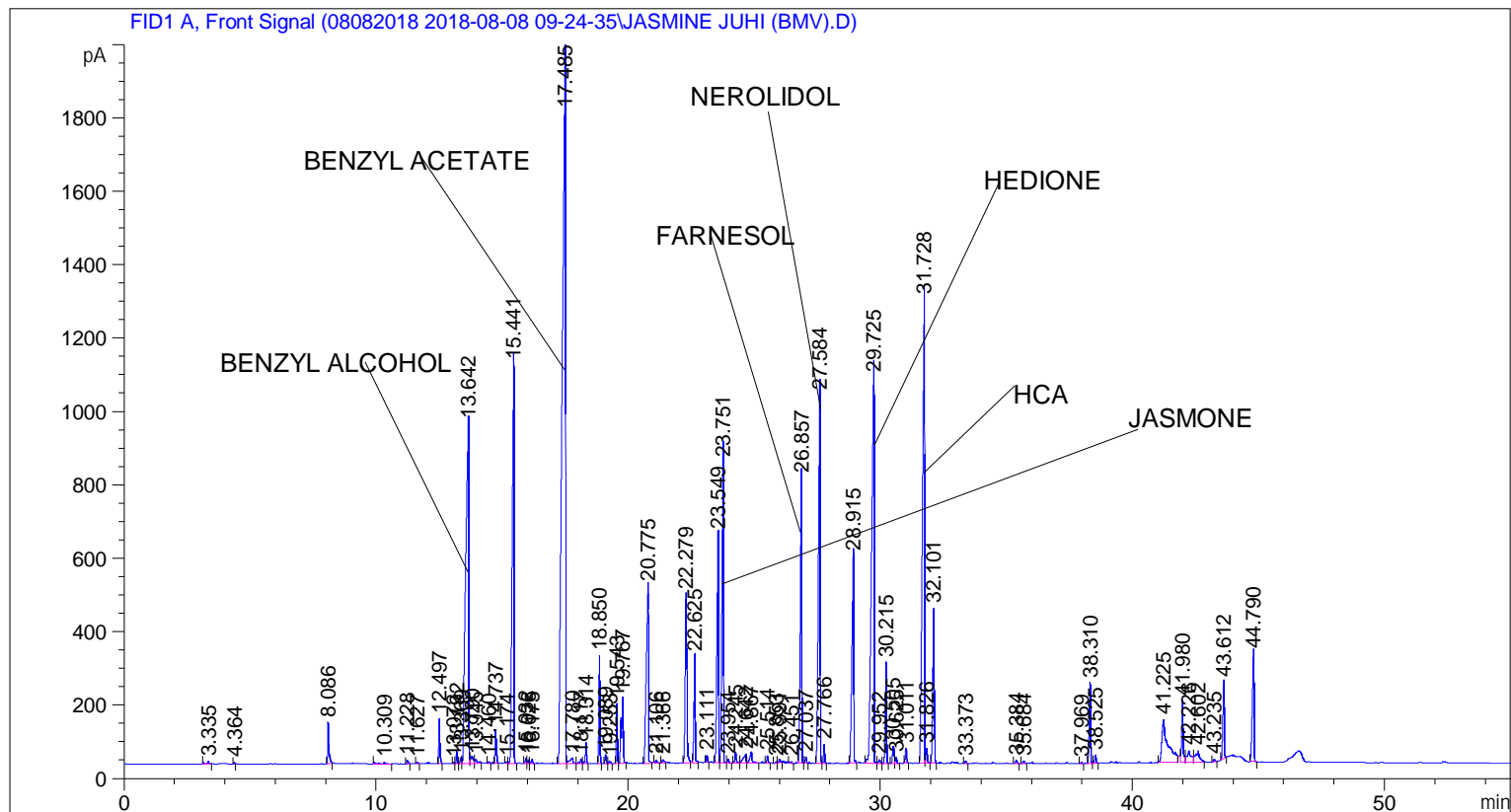


```
=====
Acq. Operator   : SYSTEM                               Seq. Line :    4
Acq. Instrument : BMV_NEW_GC_7820                     Location  : Vial 104
Injection Date  : 8/8/2018 1:02:18 PM                 Inj       :    1
                                                    Inj Volume: 0.5 µl

Acq. Method    : C:\CHEM32\2\DATA\08082018 2018-08-08 09-24-35\UNIVERSAL BMV.M
Last changed   : 8/8/2018 9:24:41 AM by SYSTEM
Analysis Method: C:\CHEM32\2\DATA\08082018 2018-08-08 09-24-35\UNIVERSAL BMV.M (Sequence
Method)
Last changed   : 8/13/2018 10:10:39 AM by SYSTEM
                (modified after loading)
Additional Info : Peak(s) manually integrated
=====
```



=====  
 Area Percent Report  
 =====

```
Sorted By      :      Signal
Multiplier     :      1.0000
Dilution       :      1.0000
Do not use Multiplier & Dilution Factor with ISTDs
```

Signal 1: FID1 A, Front Signal

Peak #	RetTime [min]	Type	Width [min]	Area [pA*s]	Height [pA]	Area %
1	3.335	BB	0.0705	30.21510	6.02683	0.03570
2	4.364	BB	0.0382	11.52771	4.77171	0.01362
3	8.086	BB	0.0491	375.83612	112.25869	0.44403
4	10.309	BB	0.0975	33.76191	4.71975	0.03989
5	11.228	BB	0.0585	37.14785	9.31687	0.04389
6	11.627	BB	0.0459	14.42226	4.96840	0.01704

Sample Name: JASMINE JUHI (BMV)

Peak #	RetTime [min]	Type	Width [min]	Area [pA*s]	Height [pA]	Area %
7	12.497	BB	0.0490	366.70212	122.08160	0.43324
8	13.072	BV	0.0428	10.08402	3.81617	0.01191
9	13.192	VV	0.0473	98.71980	34.59821	0.11663
10	13.369	VV	0.0700	73.00246	17.04540	0.08625
11	13.642	VV	0.1112	7869.62695	925.58331	9.29760
12	13.790	VV	0.0919	139.20396	20.84845	0.16446
13	13.945	VB	0.0816	68.14751	11.10022	0.08051
14	14.460	BB	0.0506	14.31133	4.56035	0.01691
15	14.737	BB	0.0526	303.61310	91.79775	0.35870
16	15.174	BV	0.0558	16.42889	4.58174	0.01941
17	15.441	VB	0.0798	5559.77344	1085.25952	6.56861
18	15.932	BV	0.0545	45.41626	13.07349	0.05366
19	16.026	VV	0.0469	31.60593	10.00496	0.03734
20	16.175	VB	0.0588	49.01908	12.77166	0.05791
21	17.485	BV	0.1213	1.76651e4	1957.34863	20.87049
22	17.780	VV	0.1311	146.90375	14.64027	0.17356
23	18.117	VV	0.0665	56.02584	12.46133	0.06619
24	18.314	VB	0.0489	179.08195	56.55978	0.21158
25	18.850	BB	0.0478	845.74261	291.67102	0.99921
26	19.089	BB	0.0490	70.49197	23.51396	0.08328
27	19.253	BB	0.0637	26.99032	6.59809	0.03189
28	19.543	BV	0.0472	463.77380	163.05360	0.54793
29	19.767	VB	0.0753	946.36572	180.14137	1.11809
30	20.775	BB	0.0886	2916.98511	482.07297	3.44628
31	21.106	BB	0.0732	45.32694	8.64517	0.05355
32	21.366	BB	0.0774	41.93863	7.96372	0.04955
33	22.279	BB	0.0674	2173.44580	457.81671	2.56782
34	22.625	BB	0.0545	1001.20782	288.06421	1.18288
35	23.111	BB	0.0538	67.16807	19.66797	0.07936
36	23.549	BV	0.0712	2623.41431	621.81769	3.09944
37	23.751	VB	0.0720	3639.95630	816.76776	4.30044
38	23.954	BB	0.0536	37.41037	10.48423	0.04420
39	24.245	BB	0.0607	116.79337	29.17676	0.13799
40	24.642	BV	0.1078	189.77486	23.61543	0.22421
41	24.867	VB	0.0899	185.95747	29.36330	0.21970
42	25.514	BB	0.0554	67.04011	19.84251	0.07920
43	25.853	BV	0.0706	16.89920	3.89651	0.01997
44	25.991	VB	0.0624	42.15414	10.17017	0.04980
45	26.451	BB	0.0449	8.24383	3.32820	0.00974
46	26.857	BB	0.0653	3278.85718	775.87018	3.87382
47	27.037	BB	0.0468	45.36519	16.15850	0.05360
48	27.584	BV	0.0769	4889.31543	1002.47284	5.77650
49	27.766	VB	0.0504	160.55211	51.40696	0.18968
50	28.915	BB	0.0717	2790.38550	564.05725	3.29671
51	29.725	BV	0.1001	7569.89746	1050.28943	8.94348
52	29.952	VV	0.0620	39.91158	9.70173	0.04715
53	30.215	VB	0.0557	930.83551	273.60287	1.09974
54	30.505	BV	0.0706	207.60970	47.89445	0.24528
55	30.625	VB	0.0532	56.02850	16.67545	0.06620
56	31.011	BB	0.0575	153.29805	41.10603	0.18111
57	31.728	BV	0.0929	7462.67578	1263.48108	8.81680
58	31.826	VB	0.0563	141.88007	39.10942	0.16762
59	32.101	BB	0.0625	1684.60217	422.89658	1.99028
60	33.373	BB	0.0519	20.63047	6.69574	0.02437

Sample Name: JASMINE JUHI (BMV)

Peak #	RetTime [min]	Type	Width [min]	Area [pA*s]	Height [pA]	Area %
61	35.384	BB	0.0687	35.16567	7.78085	0.04155
62	35.684	BB	0.0588	27.31380	7.11117	0.03227
63	37.969	BB	0.0519	11.87599	3.65577	0.01403
64	38.310	BB	0.0556	777.64618	218.12541	0.91875
65	38.525	BB	0.0583	81.76797	21.55444	0.09661
66	41.225	BB	0.2282	1962.67395	115.54262	2.31881
67	41.980	BB	0.0635	709.47827	167.13831	0.83822
68	42.226	BV	0.1507	361.79370	30.87653	0.42744
69	42.602	VB	0.1509	363.50943	31.44716	0.42947
70	43.235	BB	0.0599	27.13387	7.20851	0.03206
71	43.612	BB	0.0586	791.86719	207.25015	0.93555
72	44.790	BB	0.0694	1336.70117	292.28885	1.57925

Totals :                                      8.46415e4   1.47293e4

=====  
\*\*\* End of Report \*\*\*