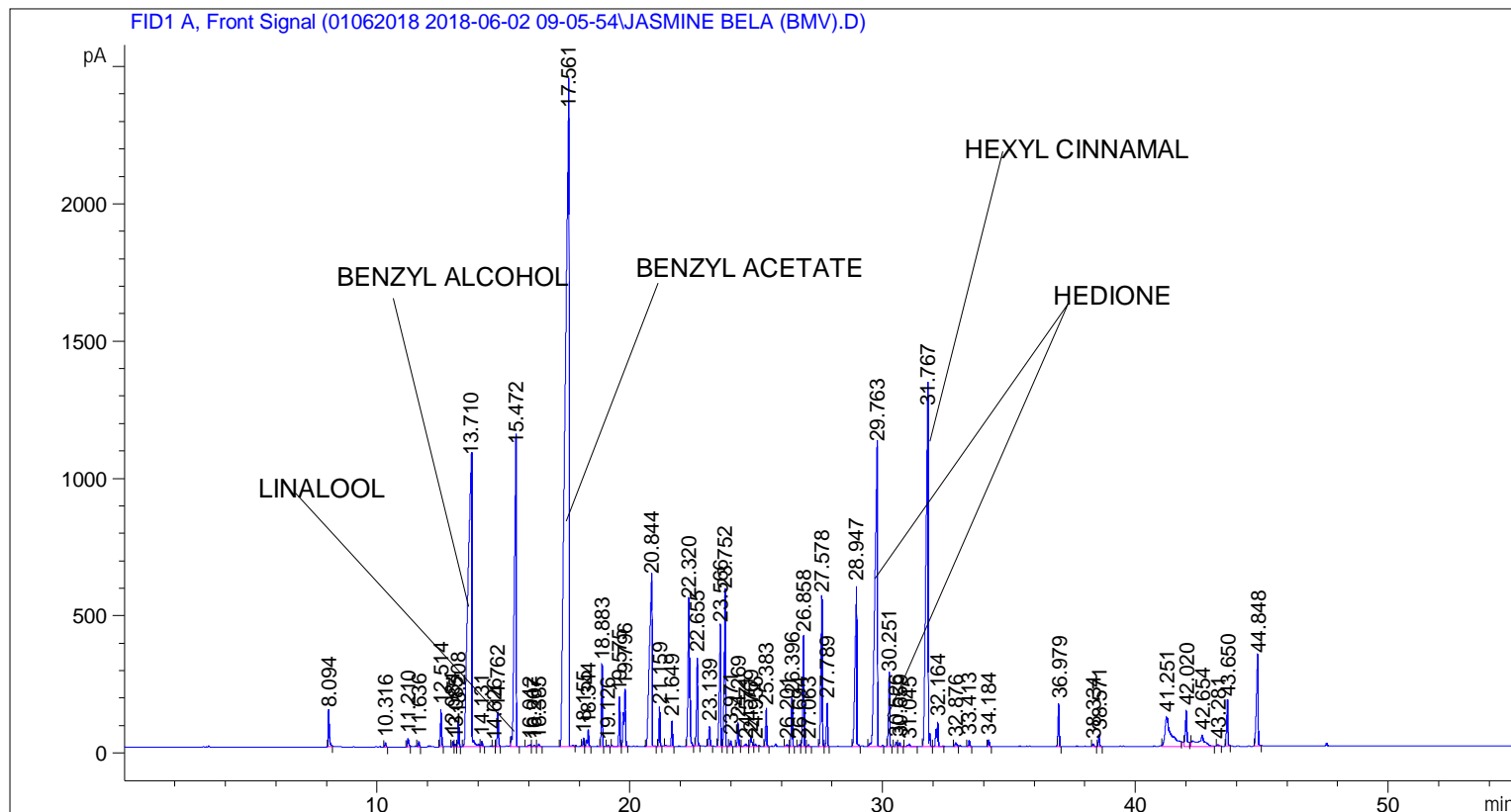


```
=====
Acq. Operator   : SYSTEM                               Seq. Line :    1
Acq. Instrument : BMV_NEW_GC_7820                     Location  : Vial 101
Injection Date  : 6/2/2018 9:30:20 AM                 Inj       :    1
                                                    Inj Volume: 0.5 µl

Acq. Method     : C:\CHEM32\2\DATA\01062018 2018-06-02 09-05-54\UNIVERSAL F.M
Last changed    : 6/2/2018 9:16:49 AM by SYSTEM
Analysis Method : C:\CHEM32\2\DATA\01062018 2018-06-02 09-05-54\UNIVERSAL F.M
Last changed    : 6/7/2018 12:06:56 PM by SYSTEM
                (modified after loading)

Additional Info : Peak(s) manually integrated
=====
```



=====
 Area Percent Report
 =====

```
Sorted By      :      Signal
Multiplier     :      1.0000
Dilution       :      1.0000
Do not use Multiplier & Dilution Factor with ISTDs
```

Signal 1: FID1 A, Front Signal

Peak #	RetTime [min]	Type	Width [min]	Area [pA*s]	Height [pA]	Area %
1	8.094	BB	0.0475	411.97684	121.81750	0.45519
2	10.316	BB	0.0454	42.57804	14.85603	0.04704
3	11.210	BB	0.0522	108.32558	31.44644	0.11969
4	11.636	BB	0.0455	57.26680	19.91804	0.06327
5	12.514	BB	0.0462	392.13831	133.87920	0.43327
6	12.984	BV	0.0498	61.59468	21.27945	0.06806
7	13.085	VV	0.0449	27.53635	9.77149	0.03042

Sample Name: JASMINE BELA (BMV)

Peak #	RetTime [min]	Type	Width [min]	Area [pA*s]	Height [pA]	Area %
8	13.208	VB	0.0452	275.59634	96.89695	0.30450
9	13.710	BV	0.1461	1.09055e4	1042.42334	12.04934
10	14.131	VB	0.0541	58.72611	17.97165	0.06489
11	14.626	BV	0.0501	9.37251	3.20217	0.01036
12	14.762	VB	0.0559	420.09195	122.94121	0.46415
13	15.472	BB	0.0760	5926.30908	1080.18884	6.54789
14	16.042	BV	0.0910	48.90407	7.60732	0.05403
15	16.207	VV	0.0581	25.43499	6.43644	0.02810
16	16.385	VB	0.0576	34.23595	9.60703	0.03783
17	17.561	BB	0.1310	2.43626e4	2387.59692	26.91783
18	18.155	BV	0.0445	84.63689	30.34363	0.09351
19	18.344	VB	0.0634	244.20396	60.14375	0.26982
20	18.883	BB	0.0465	873.82251	295.41092	0.96547
21	19.126	BB	0.0478	16.71764	5.44874	0.01847
22	19.575	BV	0.0509	537.61426	179.48172	0.59400
23	19.796	VB	0.0689	991.43823	203.24799	1.09543
24	20.844	BB	0.1016	4469.43115	609.45837	4.93821
25	21.159	BB	0.0524	415.57990	133.37210	0.45917
26	21.649	BB	0.0517	308.45837	90.53848	0.34081
27	22.320	BB	0.0671	2448.98730	518.28894	2.70585
28	22.655	BB	0.0543	1052.95483	320.46762	1.16339
29	23.139	BB	0.0653	276.76047	71.30985	0.30579
30	23.566	BV	0.0590	1740.96631	431.75714	1.92357
31	23.752	VB	0.0536	1980.91992	555.46747	2.18869
32	23.971	BB	0.0529	63.95688	20.23576	0.07067
33	24.269	BB	0.0553	287.90729	85.52609	0.31810
34	24.571	BV	0.0929	55.94297	8.48624	0.06181
35	24.769	VV	0.0687	158.09621	32.54804	0.17468
36	24.956	VB	0.0755	44.26247	8.67606	0.04890
37	25.383	BB	0.0570	455.77231	129.60211	0.50358
38	26.201	BV	0.0636	22.83021	5.60091	0.02522
39	26.396	VB	0.0537	554.90198	171.50720	0.61310
40	26.694	BV	0.0544	26.77342	8.14089	0.02958
41	26.858	VB	0.0569	1395.24133	397.90399	1.54158
42	27.063	BB	0.0536	20.58956	6.38487	0.02275
43	27.578	BV	0.0564	2055.10864	539.53363	2.27066
44	27.789	VB	0.0522	486.14481	156.83844	0.53713
45	28.947	BB	0.0689	2845.27954	583.34473	3.14371
46	29.763	BB	0.0945	7707.17139	1089.67065	8.51554
47	30.251	BB	0.0577	904.64777	253.29382	0.99953
48	30.526	BV	0.0670	68.68214	17.04076	0.07589
49	30.659	VB	0.0538	52.99383	14.77658	0.05855
50	31.045	BB	0.0780	48.31622	8.53643	0.05338
51	31.767	BB	0.0913	7873.46777	1220.65356	8.69928
52	32.164	BB	0.0720	460.55630	89.61533	0.50886
53	32.876	BB	0.0638	62.12945	13.98342	0.06865
54	33.413	BB	0.0544	74.32417	22.61032	0.08212
55	34.184	BB	0.0566	85.08649	24.43737	0.09401
56	36.979	BB	0.0517	523.98444	154.11888	0.57894
57	38.334	BB	0.0677	39.64063	8.94903	0.04380
58	38.571	BB	0.0566	145.61104	41.84913	0.16088
59	41.251	BB	0.2358	1848.30835	105.80778	2.04217
60	42.020	BB	0.0641	575.08295	128.66324	0.63540
61	42.654	BB	0.2403	761.68860	39.62065	0.84158

Sample Name: JASMINE BELA (BMV)

Peak #	RetTime [min]	Type	Width [min]	Area [pA*s]	Height [pA]	Area %
62	43.281	BB	0.0686	23.12132	5.13229	0.02555
63	43.650	BB	0.0599	597.40192	158.91231	0.66006
64	44.848	BB	0.0776	1571.46094	318.56793	1.73628

Totals : 9.05071e4 1.45031e4

=====
*** End of Report ***