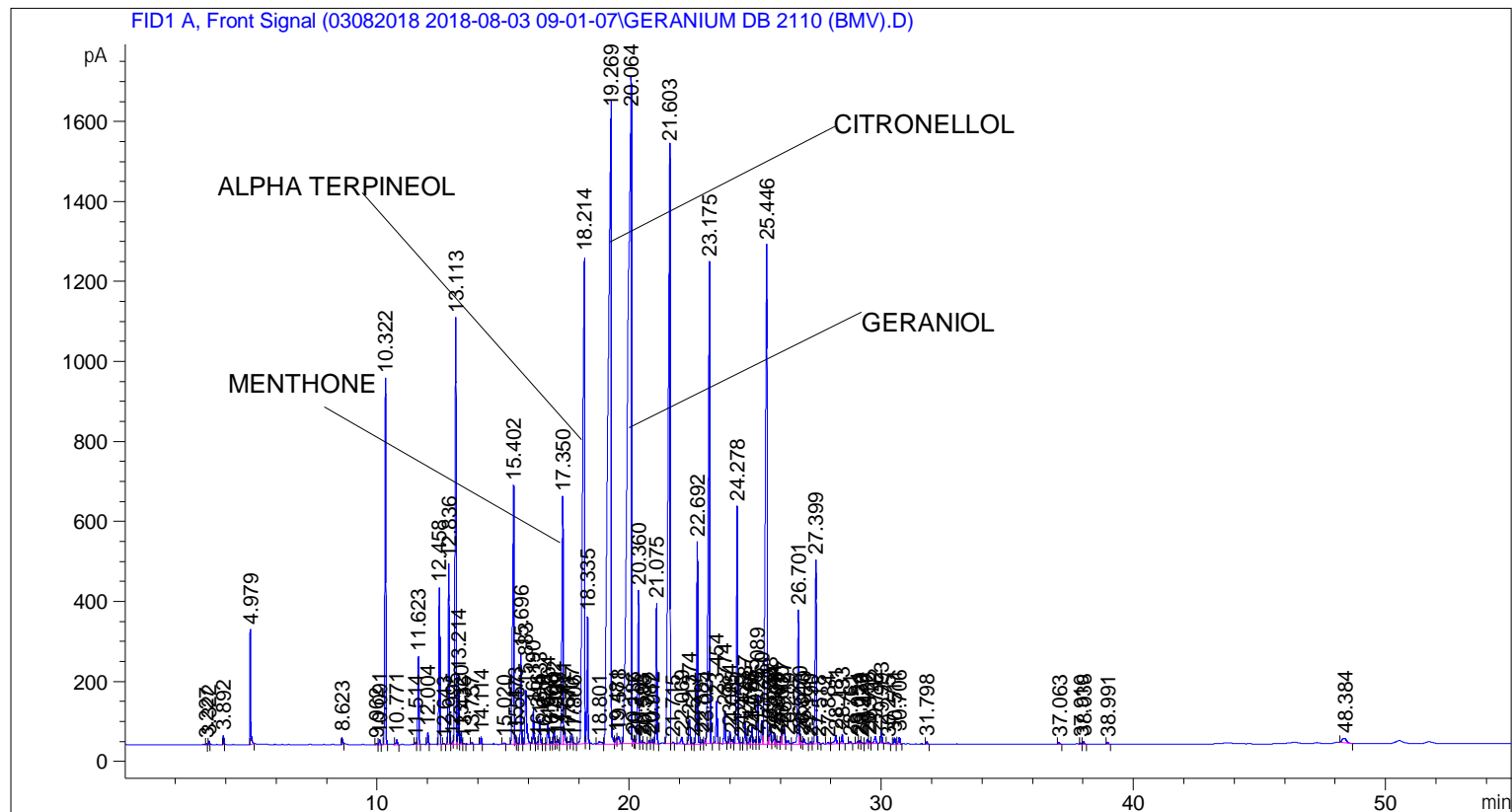


```

=====
Acq. Operator   : SYSTEM                               Seq. Line :    3
Acq. Instrument : BMV_NEW_GC_7820                     Location  : Vial 103
Injection Date  : 8/3/2018 11:32:12 AM                Inj       :    1
                                                    Inj Volume: 0.5 µl

Method         : C:\CHEM32\2\DATA\03082018 2018-08-03 09-01-07\UNIVERSAL BMV.M (Sequence
                Method)
Last changed   : 8/3/2018 9:01:15 AM by SYSTEM
  
```



Area Percent Report

```

Sorted By      :      Signal
Multiplier     :      1.0000
Dilution       :      1.0000
Do not use Multiplier & Dilution Factor with ISTDs
  
```

Signal 1: FID1 A, Front Signal

Peak #	RetTime [min]	Type	Width [min]	Area [pA*s]	Height [pA]	Area %
1	3.227	BB	0.0223	3.62493	2.44853	0.00417
2	3.322	BB	0.0224	13.95758	9.36991	0.01606
3	3.892	BB	0.0235	34.76289	21.94869	0.04000
4	4.979	BB	0.0304	549.33405	286.23865	0.63210
5	8.623	BB	0.0377	44.26379	18.00717	0.05093
6	9.962	BB	0.0417	7.84937	2.98547	0.00903
7	10.091	BB	0.0419	30.92236	11.66334	0.03558
8	10.322	BB	0.0438	2570.09790	915.09845	2.95734
9	10.771	BB	0.0459	37.43222	12.15904	0.04307
10	11.514	BV	0.0414	13.70006	5.08639	0.01576

Peak #	RetTime [min]	Type	Width [min]	Area [pA*s]	Height [pA]	Area %
11	11.623	VB	0.0428	598.23120	219.74069	0.68837
12	12.004	BB	0.0428	84.72952	31.05515	0.09750
13	12.458	BB	0.0435	1089.20227	391.38495	1.25331
14	12.643	BB	0.0367	4.34012	1.97323	0.00499
15	12.836	BB	0.0449	1273.61145	451.51776	1.46551
16	12.995	BV	0.0376	20.31819	8.27445	0.02338
17	13.113	VV	0.0497	3531.37378	1064.97644	4.06345
18	13.214	VV	0.0397	433.99847	170.21817	0.49939
19	13.320	VV	0.0426	79.94563	28.61338	0.09199
20	13.436	VB	0.0486	6.33622	1.91531	0.00729
21	13.757	BB	0.0425	15.96799	5.72773	0.01837
22	14.114	BB	0.0428	52.25556	19.16771	0.06013
23	15.020	BB	0.0553	12.45214	3.21012	0.01433
24	15.402	BV	0.0559	2488.27563	646.10901	2.86319
25	15.473	VV	0.0413	65.46931	24.36976	0.07533
26	15.557	VV	0.0425	7.95117	2.85096	0.00915
27	15.696	VB	0.0450	644.01025	227.98396	0.74104
28	15.883	BB	0.0679	608.28186	134.14391	0.69993
29	16.190	BB	0.0434	245.14711	88.35672	0.28208
30	16.346	BV	0.0454	17.59302	6.14502	0.02024
31	16.433	VB	0.0512	206.97612	61.57064	0.23816
32	16.620	BV	0.0535	7.80550	2.30678	0.00898
33	16.764	VV	0.0652	212.93132	52.62546	0.24501
34	16.908	VV	0.0478	20.28521	6.43433	0.02334
35	17.002	VV	0.0463	119.69338	39.58223	0.13773
36	17.099	VV	0.0455	18.67644	6.31107	0.02149
37	17.167	VV	0.0543	39.16446	11.07164	0.04507
38	17.350	VV	0.0527	2103.87939	617.73413	2.42088
39	17.421	VV	0.0500	132.87904	38.72823	0.15290
40	17.571	VV	0.0723	33.94136	6.67551	0.03906
41	17.707	VV	0.0518	84.60635	24.80284	0.09735
42	17.806	VB	0.0452	8.96929	3.14769	0.01032
43	18.214	BV	0.0735	7037.17725	1217.15198	8.09748
44	18.335	VB	0.0466	942.63812	317.39490	1.08467
45	18.801	BV	0.1222	55.05095	5.93753	0.06335
46	19.269	VV	0.1052	1.37240e4	1597.33032	15.79182
47	19.481	VV	0.0756	74.92553	15.44345	0.08621
48	19.578	VV	0.0804	97.55491	18.83480	0.11225
49	20.064	VV	0.1136	1.57269e4	1673.33484	18.09647
50	20.136	VV	0.0463	37.28330	11.65176	0.04290
51	20.217	VV	0.0430	16.85436	5.61664	0.01939
52	20.360	VV	0.0519	1275.09802	382.71588	1.46722
53	20.503	VV	0.0562	32.94085	8.49632	0.03790
54	20.586	VB	0.0471	10.53873	3.50108	0.01213
55	20.787	BV	0.0525	26.75824	7.70700	0.03079
56	20.912	VV	0.0588	41.72272	11.10180	0.04801
57	21.075	VB	0.0503	1121.13953	350.36127	1.29006
58	21.603	BV	0.0685	7606.85156	1492.27112	8.75299
59	21.715	VB	0.0565	11.63257	2.74040	0.01339
60	22.069	BB	0.0662	74.60802	16.68863	0.08585
61	22.374	BV	0.0684	256.50797	60.61131	0.29516
62	22.517	VV	0.0580	11.78298	3.35613	0.01356
63	22.692	VV	0.0524	1706.53149	505.42862	1.96366
64	22.885	VV	0.0524	37.43175	11.36992	0.04307

Peak #	RetTime [min]	Type	Width [min]	Area [pA*s]	Height [pA]	Area %
65	23.024	VV	0.0368	29.81797	12.52958	0.03431
66	23.175	VB	0.0607	5233.01660	1203.77527	6.02149
67	23.454	BB	0.0518	361.81885	105.96346	0.41633
68	23.774	BB	0.0601	315.64255	83.41507	0.36320
69	23.984	BV	0.0517	105.16879	30.88707	0.12101
70	24.085	VV	0.0661	47.08326	10.96729	0.05418
71	24.278	VB	0.0514	2004.86499	593.25635	2.30694
72	24.459	BV	0.0576	15.23380	3.81141	0.01753
73	24.587	VV	0.0509	173.70218	53.45060	0.19987
74	24.768	VV	0.0511	54.06371	16.56718	0.06221
75	24.855	VV	0.0465	125.87221	41.33974	0.14484
76	24.978	VV	0.0570	38.24955	9.90819	0.04401
77	25.089	VV	0.0492	387.60458	121.40749	0.44601
78	25.260	VV	0.0562	222.70473	58.73971	0.25626
79	25.446	VV	0.0615	5711.13867	1245.27100	6.57165
80	25.523	VV	0.0416	55.78230	20.62332	0.06419
81	25.588	VV	0.0533	165.16010	47.76830	0.19005
82	25.744	VV	0.0582	120.22446	29.69027	0.13834
83	25.808	VV	0.0416	28.37490	10.15579	0.03265
84	25.887	VV	0.0667	38.21180	7.99909	0.04397
85	26.030	VV	0.0462	79.25168	26.26229	0.09119
86	26.127	VV	0.0908	235.96880	37.83522	0.27152
87	26.289	VV	0.0773	47.05908	8.66831	0.05415
88	26.701	VV	0.0531	1148.94995	334.47000	1.32206
89	26.770	VV	0.0374	66.74632	26.44950	0.07680
90	26.843	VV	0.0427	22.99953	8.20286	0.02646
91	26.920	VB	0.0577	57.59793	14.08949	0.06628
92	27.190	BV	0.0497	19.14593	6.09208	0.02203
93	27.399	VV	0.0552	1585.59680	460.42200	1.82450
94	27.518	VB	0.0337	5.98946	2.94684	0.00689
95	27.884	BV	0.0612	20.59302	4.78577	0.02370
96	28.181	VB	0.0721	113.51075	22.03320	0.13061
97	28.433	BB	0.0488	74.19878	22.89186	0.08538
98	28.761	BB	0.0582	23.09596	5.83401	0.02658
99	29.054	BV	0.0556	22.16499	5.79345	0.02550
100	29.130	VV	0.0512	29.71693	9.06642	0.03419
101	29.223	VV	0.0549	15.26016	3.96737	0.01756
102	29.436	VV	0.0587	47.15207	11.77300	0.05426
103	29.512	VV	0.0473	20.00989	6.43677	0.02302
104	29.742	VB	0.0720	83.77538	17.13375	0.09640
105	29.993	BB	0.0476	102.44913	33.52922	0.11789
106	30.275	BB	0.0549	17.10748	4.65147	0.01969
107	30.511	BB	0.0508	53.36962	16.03591	0.06141
108	30.706	BB	0.0524	56.94561	16.46178	0.06553
109	31.798	BB	0.0528	18.63116	5.59819	0.02144
110	37.063	BB	0.0547	16.25684	4.65830	0.01871
111	37.910	BV	0.0518	11.36062	3.51029	0.01307
112	38.038	VB	0.0539	21.53040	6.45294	0.02477
113	38.991	BB	0.0548	17.81327	5.09895	0.02050
114	48.384	BB	0.1484	136.60980	11.35149	0.15719

Totals : 8.69057e4 1.82528e4

=====

*** End of Report ***