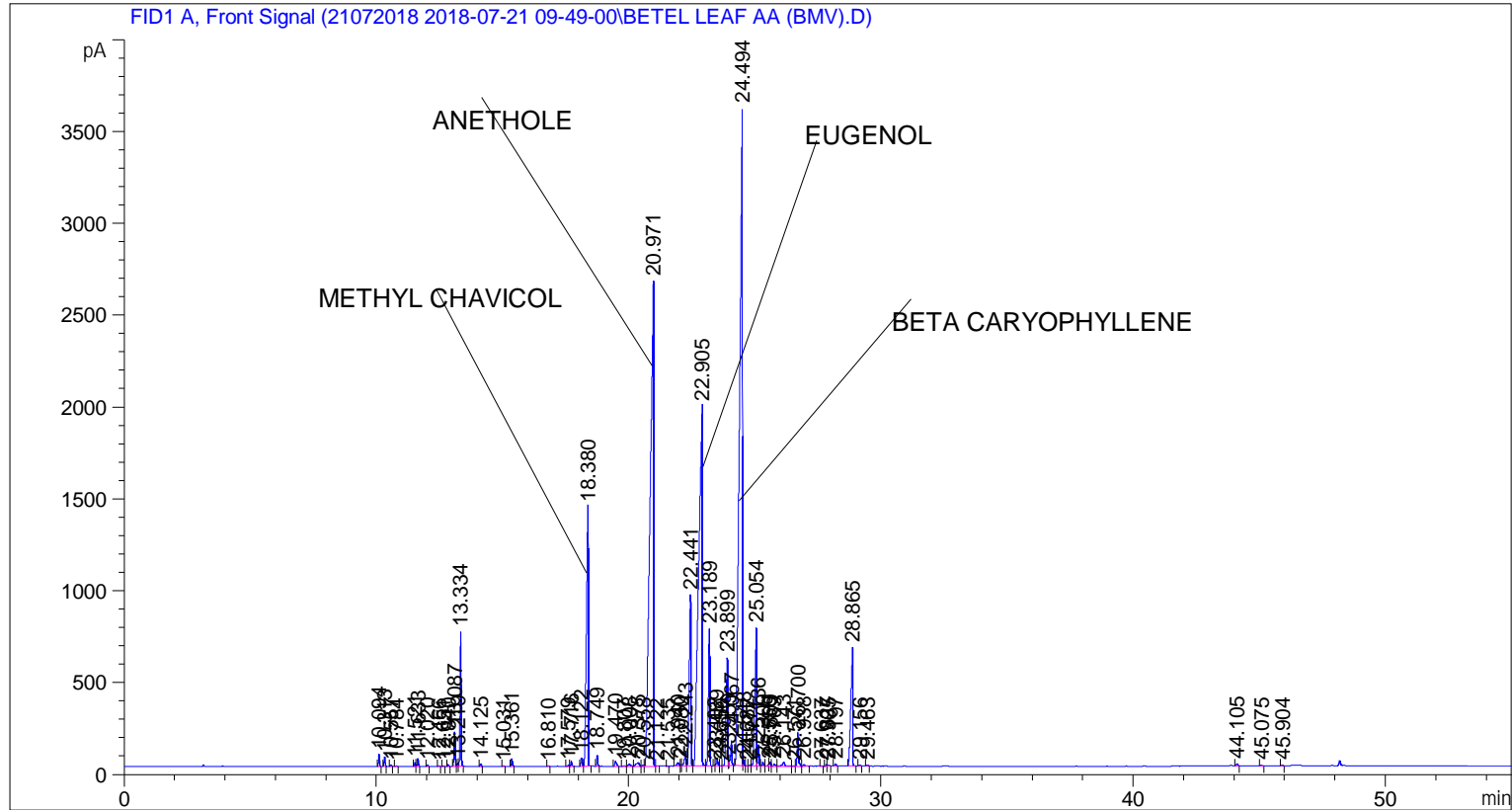


```

=====
Acq. Operator   : SYSTEM                               Seq. Line :    3
Acq. Instrument : BMV_NEW_GC_7820                     Location  : Vial 103
Injection Date  : 7/21/2018 12:18:13 PM                Inj       :    1
                                                    Inj Volume: 0.5 µl

Acq. Method     : C:\CHEM32\2\DATA\21072018 2018-07-21 09-49-00\UNIVERSAL BMV.M
Last changed    : 7/21/2018 9:49:06 AM by SYSTEM
Analysis Method : C:\CHEM32\2\DATA\21072018 2018-07-21 09-49-00\UNIVERSAL BMV.M (Sequence
Method)
Last changed    : 7/28/2018 12:19:08 PM by SYSTEM
                  (modified after loading)
Additional Info  : Peak(s) manually integrated
  
```



=====
 Area Percent Report
 =====

```

Sorted By      :      Signal
Multiplier     :      1.0000
Dilution       :      1.0000
Do not use Multiplier & Dilution Factor with ISTDs
  
```

Signal 1: FID1 A, Front Signal

Peak #	RetTime [min]	Type	Width [min]	Area [pA*s]	Height [pA]	Area %
1	10.094	BB	0.0413	173.76868	64.80109	0.16739
2	10.313	BB	0.0432	140.62175	50.94796	0.13546
3	10.557	BB	0.0452	21.06392	6.98840	0.02029
4	10.784	BB	0.0434	5.58920	2.07482	0.00538
5	11.521	BV	0.0431	58.20964	21.14272	0.05607
6	11.633	VB	0.0440	125.21476	44.33266	0.12062

Sample Name: BETEL LEAF AA (BMV)

Peak #	RetTime [min]	Type	Width [min]	Area [pA*s]	Height [pA]	Area %
7	12.020	BB	0.0433	14.45059	5.06693	0.01392
8	12.466	BB	0.0435	11.55097	4.15061	0.01113
9	12.651	BB	0.0436	7.23910	2.59019	0.00697
10	12.840	BB	0.0446	21.55914	7.70967	0.02077
11	13.087	BV	0.0449	549.81598	189.14088	0.52962
12	13.219	VV	0.0507	52.69275	16.31160	0.05076
13	13.334	VB	0.0466	2167.87305	730.66382	2.08825
14	14.125	BB	0.0441	36.36711	12.83705	0.03503
15	15.031	BB	0.0486	8.22498	2.62013	0.00792
16	15.361	BB	0.0460	124.11704	41.42596	0.11956
17	16.810	BB	0.0457	7.21408	2.35591	0.00695
18	17.579	BV	0.0497	15.73434	4.87496	0.01516
19	17.716	VB	0.0517	84.32536	25.39204	0.08123
20	18.122	BV	0.0611	175.55318	45.41702	0.16911
21	18.380	VB	0.0669	7120.44727	1409.71509	6.85891
22	18.749	BB	0.0435	165.42821	59.33564	0.15935
23	19.470	BB	0.0682	121.18884	25.15528	0.11674
24	19.807	BB	0.0648	14.89943	3.42079	0.01435
25	20.008	BB	0.0802	72.95644	12.29296	0.07028
26	20.375	BV	0.1174	160.90108	19.07908	0.15499
27	20.558	VV	0.0669	20.27347	4.55459	0.01953
28	20.971	VV	0.1161	2.49065e4	2638.40747	23.99172
29	21.122	VB	0.0541	9.79907	2.71413	0.00944
30	21.535	BB	0.0416	6.20044	2.28703	0.00597
31	21.940	BV	0.0767	110.65395	19.65657	0.10659
32	22.080	VV	0.0424	20.74380	7.24644	0.01998
33	22.243	VV	0.0746	393.97742	82.66510	0.37951
34	22.441	VV	0.0748	4540.97998	931.93768	4.37419
35	22.905	VV	0.1258	1.92543e4	1956.00049	18.54704
36	23.189	VB	0.0553	2712.00879	747.15094	2.61240
37	23.402	BV	0.0448	13.82739	4.77409	0.01332
38	23.489	VV	0.0596	184.72037	44.36531	0.17794
39	23.650	VV	0.0513	7.02209	2.25477	0.00676
40	23.899	VV	0.0569	2416.94019	589.10773	2.32816
41	23.959	VV	0.0318	55.88741	26.29115	0.05383
42	24.067	VB	0.0522	499.07559	134.76338	0.48074
43	24.494	BV	0.0981	2.83282e4	3589.10522	27.28767
44	24.548	VB	0.0354	79.08186	34.95743	0.07618
45	24.682	BV	0.0440	6.27166	2.21699	0.00604
46	24.777	VV	0.0487	11.86906	3.57885	0.01143
47	25.054	VV	0.0649	3729.81128	751.43188	3.59281
48	25.136	VV	0.0491	365.34262	114.76570	0.35192
49	25.309	VV	0.0494	75.10157	23.42564	0.07234
50	25.550	VV	0.0401	25.87305	9.72034	0.02492
51	25.609	VV	0.0489	75.72803	23.31883	0.07295
52	25.769	VV	0.0648	60.72577	13.42750	0.05850
53	26.143	VV	0.0951	144.81273	20.84426	0.13949
54	26.571	VV	0.0661	14.42939	3.05521	0.01390
55	26.700	VV	0.0525	632.88739	182.45187	0.60964
56	26.938	VB	0.0601	40.23627	10.18978	0.03876
57	27.637	BB	0.0544	10.23153	2.75056	0.00986
58	27.827	BV	0.0480	26.13976	8.23233	0.02518
59	27.905	VB	0.0612	22.21207	5.37629	0.02140
60	28.197	BB	0.0543	42.10842	11.61585	0.04056

Peak #	RetTime [min]	Type	Width [min]	Area [pA*s]	Height [pA]	Area %
61	28.865	BB	0.0721	3420.25635	642.77771	3.29463
62	29.156	BB	0.0510	15.02951	4.73535	0.01448
63	29.463	BB	0.0542	19.37706	5.48799	0.01867
64	44.105	BB	0.0538	36.25808	10.37745	0.03493
65	45.075	BB	0.0565	10.27994	2.89069	0.00990
66	45.904	BB	0.0526	10.93870	3.22149	0.01054

Totals : 1.03813e5 1.54840e4

=====
*** End of Report ***