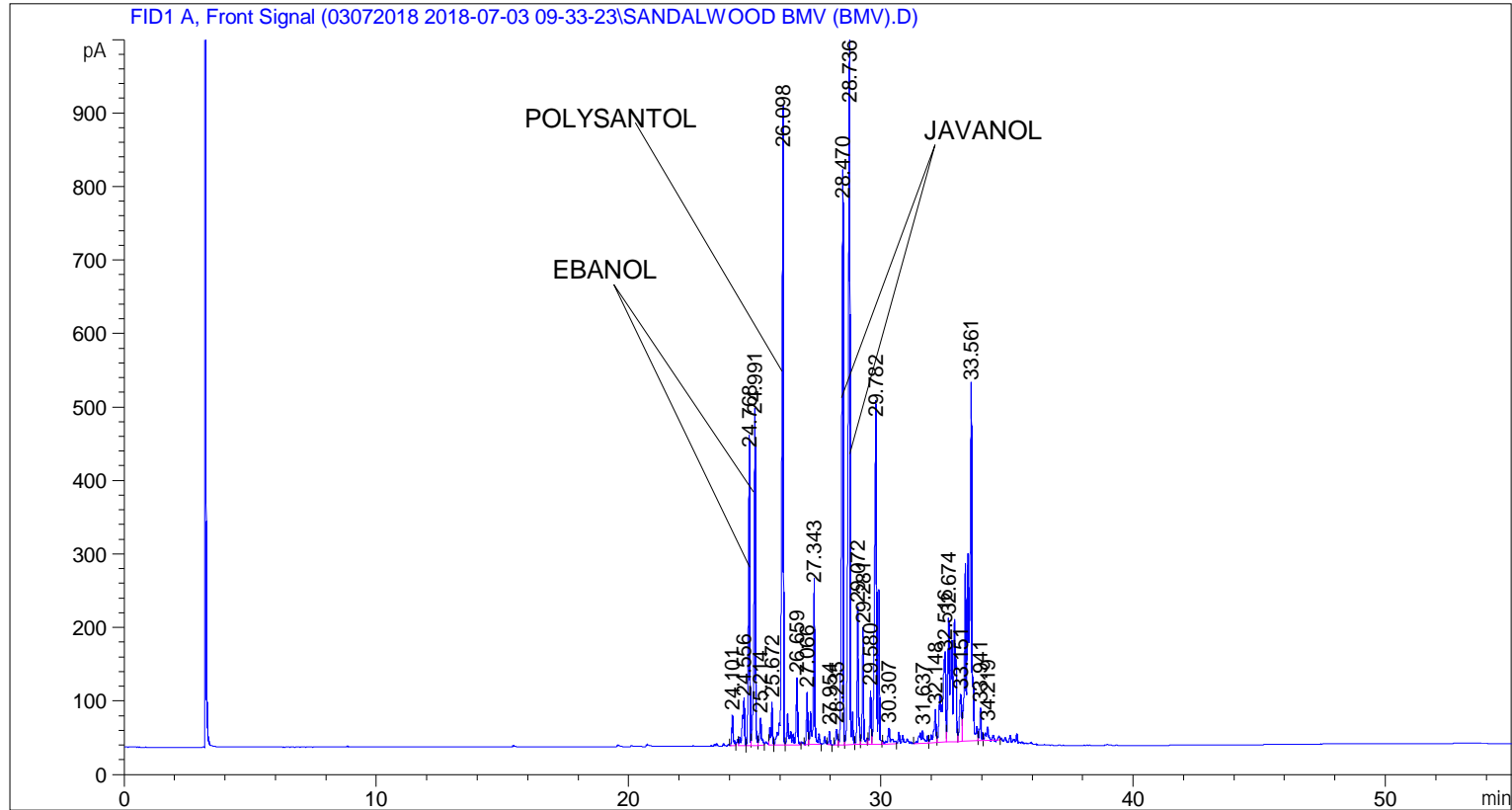


```

=====
Acq. Operator   : SYSTEM                               Seq. Line :    1
Acq. Instrument : BMV_NEW_GC_7820                     Location  : Vial 101
Injection Date  : 7/3/2018 9:37:17 AM                 Inj       :    1
                                                    Inj Volume: 0.5 µl

Acq. Method     : C:\CHEM32\2\DATA\03072018 2018-07-03 09-33-23\UNIVERSAL F.M
Last changed    : 7/3/2018 9:33:29 AM by SYSTEM
Analysis Method : C:\CHEM32\2\DATA\03072018 2018-07-03 09-33-23\UNIVERSAL F.M (Sequence
Method)
Last changed    : 7/3/2018 3:33:54 PM by SYSTEM
                  (modified after loading)
Additional Info  : Peak(s) manually integrated
  
```



=====
 Area Percent Report
 =====

```

Sorted By      :      Signal
Multiplier     :      1.0000
Dilution       :      1.0000
Do not use Multiplier & Dilution Factor with ISTDs
  
```

Signal 1: FID1 A, Front Signal

Peak #	RetTime [min]	Type	Width [min]	Area [pA*s]	Height [pA]	Area %
1	24.101	BB	0.0638	152.58521	40.65688	0.46509
2	24.556	BV	0.1129	388.03485	58.86008	1.18276
3	24.768	VV	0.0667	1593.89539	398.36658	4.85833
4	24.991	VV	0.0688	1856.92871	443.94238	5.66007
5	25.214	VB	0.0743	184.41443	36.93557	0.56211
6	25.672	BV	0.0713	252.97549	57.53754	0.77109

Peak #	RetTime [min]	Type	Width [min]	Area [pA*s]	Height [pA]	Area %
7	26.098	VV	0.0750	3801.74609	805.92621	11.58804
8	26.659	VB	0.1022	632.79694	89.75936	1.92882
9	27.066	BV	0.0649	268.46426	69.76202	0.81830
10	27.343	VB	0.0749	1003.34198	213.25816	3.05827
11	27.954	BB	0.0550	60.12950	18.00329	0.18328
12	28.235	BV	0.0774	105.91685	21.53114	0.32284
13	28.470	VV	0.0749	3458.89795	735.57452	10.54301
14	28.736	VV	0.0806	4733.17432	911.42004	14.42711
15	29.072	VV	0.0653	718.83752	184.97745	2.19108
16	29.281	VB	0.0631	578.33899	156.46707	1.76283
17	29.580	BV	0.0667	288.92371	72.19256	0.88066
18	29.782	VB	0.1058	3068.07715	437.82922	9.35176
19	30.307	BV	0.1224	176.03648	20.87791	0.53657
20	31.637	BV	0.1584	207.49107	17.00388	0.63245
21	32.148	VV	0.0928	277.13370	44.41854	0.84473
22	32.516	VV	0.1559	1266.45532	115.54819	3.86026
23	32.674	VV	0.1883	2441.37280	165.32925	7.44151
24	33.151	VV	0.0953	386.47461	63.26884	1.17801
25	33.561	VV	0.1265	4566.70361	482.26007	13.91970
26	33.941	VV	0.0661	174.15714	44.10483	0.53085
27	34.219	VB	0.1269	164.19275	17.92150	0.50047

Totals : 3.28075e4 5723.73312

=====
*** End of Report ***