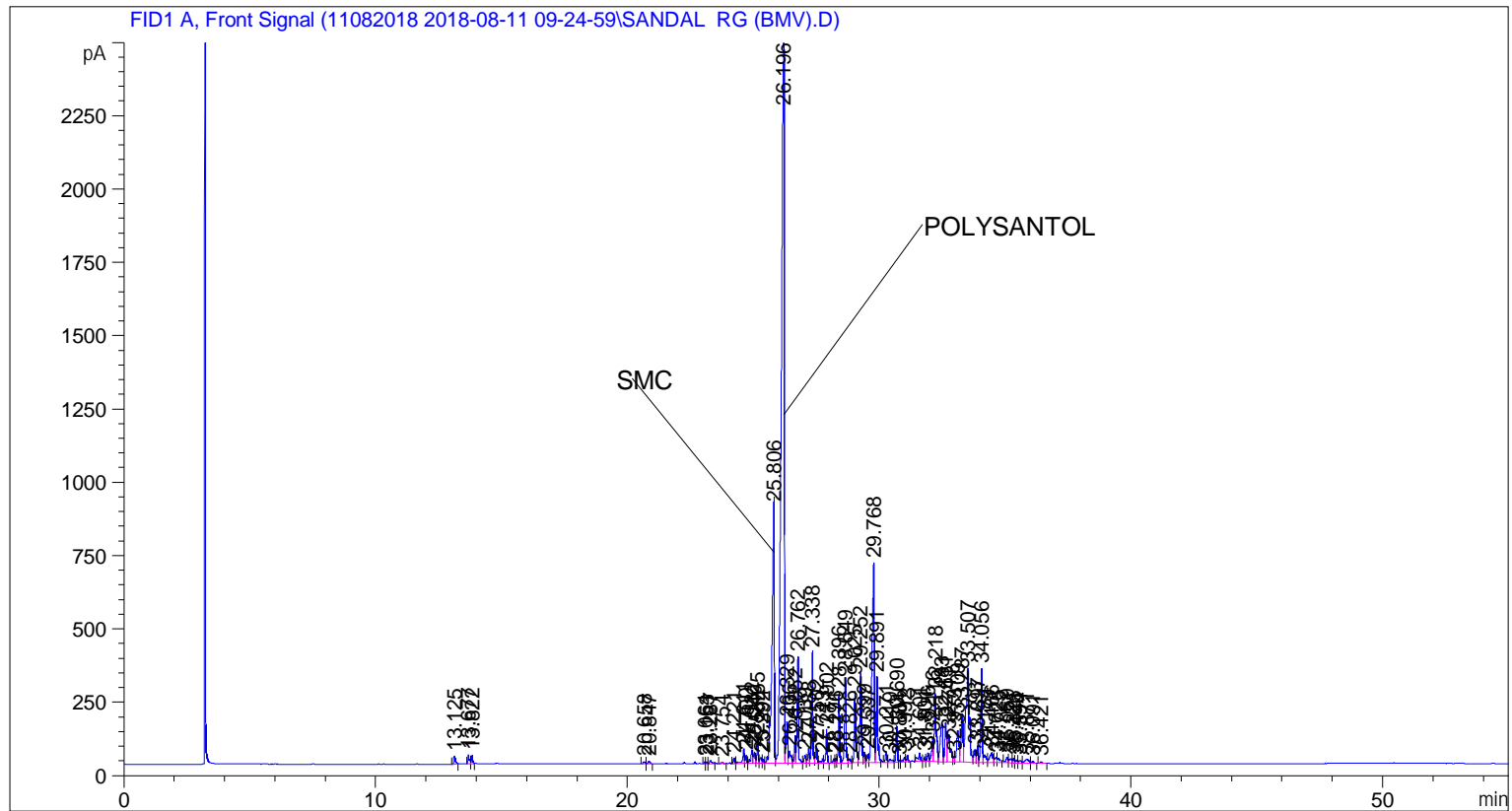


```

=====
Acq. Operator   : SYSTEM                               Seq. Line :    2
Acq. Instrument : BMV_NEW_GC_7820                     Location  : Vial 102
Injection Date  : 8/11/2018 10:48:59 AM                Inj       :    1
                                                    Inj Volume: 0.5 µl

Acq. Method     : C:\CHEM32\2\DATA\11082018 2018-08-11 09-24-59\UNIVERSAL BMV.M
Last changed    : 8/11/2018 9:25:06 AM by SYSTEM
Analysis Method : C:\CHEM32\2\DATA\11082018 2018-08-11 09-24-59\UNIVERSAL BMV.M (Sequence
Method)
Last changed    : 8/13/2018 10:37:10 AM by SYSTEM
                  (modified after loading)
Additional Info  : Peak(s) manually integrated
  
```



=====
 Area Percent Report
 =====

```

Sorted By      :      Signal
Multiplier     :      1.0000
Dilution      :      1.0000
Do not use Multiplier & Dilution Factor with ISTDs
  
```

Signal 1: FID1 A, Front Signal

Peak #	RetTime [min]	Type	Width [min]	Area [pA*s]	Height [pA]	Area %
1	13.125	BB	0.0811	135.44589	26.72437	0.24361
2	13.677	BV	0.0594	124.91994	30.75443	0.22468
3	13.822	VB	0.0512	92.66832	27.59421	0.16667
4	20.658	BV	0.0859	44.95763	8.47659	0.08086
5	20.847	VB	0.0895	52.32816	9.03873	0.09412
6	23.064	BV	0.0490	22.05681	7.34916	0.03967

Sample Name: SANDAL RG (BMV)

Peak #	RetTime [min]	Type	Width [min]	Area [pA*s]	Height [pA]	Area %
7	23.153	VV	0.0442	17.49294	5.97261	0.03146
8	23.287	VB	0.0934	70.50361	10.90362	0.12681
9	23.754	BB	0.0744	17.93499	4.15362	0.03226
10	24.221	BV	0.0581	68.75136	19.05715	0.12365
11	24.611	VV	0.0688	231.33267	49.27651	0.41607
12	24.700	VV	0.0526	95.92870	27.53415	0.17253
13	24.932	VV	0.0742	241.79710	46.82990	0.43489
14	25.040	VV	0.0709	185.42917	38.00100	0.33351
15	25.165	VV	0.0542	275.61758	79.93658	0.49572
16	25.294	VV	0.0899	109.99849	19.48242	0.19784
17	25.392	VV	0.0484	50.74867	15.43563	0.09128
18	25.806	VV	0.0931	5760.22949	871.17627	10.36018
19	26.196	VV	0.1266	2.05189e4	2479.12549	36.90476
20	26.329	VV	0.0642	583.03638	141.26332	1.04863
21	26.436	VV	0.0784	238.14554	40.59724	0.42832
22	26.652	VV	0.0506	309.69922	93.51821	0.55702
23	26.762	VV	0.0561	1307.30713	362.23184	2.35128
24	27.039	VV	0.0723	134.68279	26.93596	0.24224
25	27.188	VV	0.0670	217.43291	49.76777	0.39107
26	27.338	VV	0.0557	1340.97583	375.29855	2.41184
27	27.502	VV	0.0601	226.69180	57.36070	0.40772
28	27.743	VV	0.0827	91.16767	15.49110	0.16397
29	27.902	VB	0.0573	425.85657	114.66107	0.76593
30	28.191	BV	0.0676	63.34275	13.79249	0.11393
31	28.276	VV	0.0496	53.46416	15.75736	0.09616
32	28.396	VV	0.0543	816.02405	236.06680	1.46768
33	28.649	VV	0.0633	1179.41333	290.70673	2.12126
34	28.826	VV	0.0740	69.64152	14.51177	0.12526
35	29.025	VV	0.0659	1066.09387	239.44231	1.91744
36	29.252	VV	0.0654	1337.32727	303.39426	2.40528
37	29.399	VV	0.0602	149.40663	36.15868	0.26872
38	29.537	VV	0.0637	118.17752	28.92233	0.21255
39	29.768	VV	0.0990	4123.20898	677.98279	7.41588
40	29.891	VB	0.0592	1115.16394	288.13388	2.00570
41	30.271	BV	0.0711	159.34650	36.38470	0.28660
42	30.419	VV	0.1134	83.86418	9.84282	0.15084
43	30.690	VV	0.0598	461.78372	122.88890	0.83055
44	30.804	VV	0.0464	24.58819	8.33684	0.04422
45	30.992	VV	0.0758	84.02584	15.86544	0.15113
46	31.113	VB	0.0558	77.23392	22.64504	0.13891
47	31.601	BV	0.0911	185.97913	28.15077	0.33450
48	31.801	VV	0.0576	56.68046	15.90158	0.10194
49	31.926	VV	0.0653	118.94400	28.14625	0.21393
50	32.116	VV	0.0631	353.55521	80.69105	0.63589
51	32.218	VV	0.0797	1258.73010	230.43149	2.26391
52	32.483	VV	0.1116	907.18433	129.68544	1.63163
53	32.631	VV	0.0697	636.93976	133.41473	1.14558
54	32.741	VV	0.1137	741.12952	92.26125	1.33297
55	32.973	VV	0.0685	87.96848	18.81660	0.15822
56	33.109	VV	0.1014	733.42157	107.81580	1.31911
57	33.287	VV	0.0714	770.71100	162.25633	1.38618
58	33.507	VV	0.1160	2866.03467	321.44504	5.15477
59	33.793	VV	0.0730	211.06494	43.19970	0.37962
60	33.897	VV	0.0605	224.86742	56.41306	0.40444

Sample Name: SANDAL RG (BMV)

Peak #	RetTime [min]	Type	Width [min]	Area [pA*s]	Height [pA]	Area %
61	34.056	VV	0.0574	1183.94409	318.34409	2.12941
62	34.184	VV	0.0980	177.47411	24.65936	0.31920
63	34.466	VV	0.1110	281.97263	33.91766	0.50715
64	34.628	VV	0.0810	103.09805	17.96487	0.18543
65	34.725	VB	0.1023	124.06084	16.39492	0.22313
66	35.069	BV	0.0863	117.09306	19.43505	0.21060
67	35.221	VV	0.0987	90.29346	14.09724	0.16240
68	35.325	VV	0.0606	62.78468	15.72676	0.11292
69	35.446	VV	0.0805	51.75225	9.97268	0.09308
70	35.594	VV	0.1070	55.67734	8.02413	0.10014
71	35.871	VV	0.1552	153.61647	13.66120	0.27629
72	36.091	VB	0.0743	31.63886	6.32938	0.05690
73	36.421	BB	0.0923	38.91301	5.94792	0.06999

Totals : 5.55997e4 9367.88567

=====
*** End of Report ***